

Join Panda Travel in...

2027 Hokkaido Winter Wonderland #I

(GPI3627)



Ice cleats will be provided
for all tour members.

Jan 30 - Feb 7, 2027
7 Nights/ 9 Days

*Haneda - Chitose - Shikaribetsu -
Tokachigawa - Abashiri - Sounkyo -
Asahikawa - Sapporo - Lake Shikotsu*

\$100 OFF PER PERSON
on our complete package when you pay
with a personal check/cash

JAL Economy Class

\$4,488*

pp double/triple occupancy

\$5,388*

single occupancy

JAL Premium Economy Class

\$5,488*

pp double/triple occupancy

\$6,288*

single occupancy

pandaonline.com

(808) 734-1961

1017 Kapahulu Ave, Honolulu, HI 96816

A minimum of 16 participants is
required for the tour to operate

Itinerary

Day 1: (Sat) Jan 30 – Honolulu Depart Honolulu via Japan Airlines 73

→ Meet the Panda Travel representative at the airline's check-in counters 3 hours prior to departure.

Day 2: (Sun) Jan 31 – Haneda-CTS (D)

Air Terminal Hotel (Free Wi-Fi)

→ 4:05pm – Arrive at Haneda Airport.

→ 6:30pm – Depart Haneda to New Chitose Airport (CTS) via Japan Airlines domestic flight (JL527).

→ 8:05pm – Welcome to Hokkaido! Meet your local English-speaking guide at the arrival lobby. Our accommodations tonight is the **Air Terminal Hotel**, located on the airport grounds and just a short walk away. A **bento box** will be provided this evening.

Day 3: (Mon) Feb 1 – Chitose-Shikaribetsu-Tokachigawa (B/L/D)

Kangetsuen (Free Wi-Fi) - Enjoy onsen

→ Breakfast at hotel.

→ 8:30am — Meet your guide at the hotel lobby for a full day tour to Tokachigawa.

→ 11:00am — We'll enjoy a **Japanese style lunch** at Tokachi Sahoro Resort.

→ 1:00pm — Prepare yourself for a visit to the magnificent winter ice village at **Shikaribetsuko Kotan Ice Village Festival**. Built on the frozen surface of Lake Shikaribetsu, this village of igloos is crafted entirely from the lake's pristine waters. Set against the scenic backdrop of the surrounding natural landscape, these igloos, accompanied with a captivating display of intricate ice sculptures and ice art, make for an incredible winter experience.

→ 4:00pm — Now, stop by **Aeon Mall Obihiro**, a shopping arcade with retail stores, home goods, eateries, and much more.

→ 5:30pm — Arrive at Kangetsuen, followed by a **buffet dinner at 6:00pm**.

→ 7:30pm — After dinner, meet at the hotel lobby for the **Sairinka Light up - Tokachigawa Swan Festival**. Held in tribute to the annual migration of approximately 1,000 swans into the Tokachigawa area, this winter event draws around 50,000 visitors each year and features a fantastical forest of lights of over hundreds pieces of illuminated art, a dazzling laser and light show, snow rafting, and more.

→ 8:45pm — **Return to hotel**. The night is still young; enjoy the hotel's onsen.

Day 4: (Tue) Feb 2 – Tokachigawa-Abashiri (B/L/D)

Hotel Abashirikoso (Free Wi-Fi) - Enjoy onsen

→ Breakfast at hotel.

→ 8:30am — Meet your guide at the hotel lobby for a full day tour to Abashiri.

→ 9:15am — Our morning begins with a visit to **Ikeda Wine Factory**. Also known as the "Ikeda Wine Castle" for its resemblance to a medieval European castle, this factory is one of Ikeda Town's specialties. Enjoy some free time exploring the exhibition rooms displaying grape cultivation and winemaking techniques, as well as the wine maturation cellars. The factory also features a wine tasting area, a restaurant, and a shop selling wines and other local specialties.

→ 11:30am — Now a stop at the **Akan International Crane Center**. A combination of a museum, a breeding center, and a sanctuary where cranes can be seen year-round, this facility is unique to Japan in its purpose to conserve the tancho crane while also providing research and information about these magnificent birds. Explore the informative display indoors and the tancho cranes being raised in nature outdoors.

→ 1:30pm — Enjoy a **Japanese-style lunch at a local restaurant**.

→ 2:45pm — During our time at the **Akan Ainu Kotan Village**, we'll pay a visit to a museum dedicated to the indigenous Ainu people of Hokkaido, enjoy a traditional ancient **Ainu dance performance** by local Ainu, and spend some free time exploring the village's main street and souvenir shops specializing in Ainu handicrafts.

→ 6:00pm — Arrive at **Hotel Abashirikoso**, followed by a **buffet dinner at 7pm**. Located on the shores of Lake Abashiri, our hotel features a large public bath, natural hot springs, a sauna, a large indoor bathtub, 2 small indoor bathtubs, and an open-air bathtub.

Day 5: (Wed) Feb 3 – Abashiri-Sounkyo (B/L/D)

Sounkyo Choyotei (Free Wi-Fi) - Enjoy onsen

→ Breakfast at hotel.

→ 8:45am — Meet your guide at the hotel lobby for a full day tour to Sounkyo.

→ 9:30am (TBC) — Get ready for an adventurous ride aboard the **Abashiri Icebreaker Ship**. This one-of-a-kind cruise is designed to navigate the icy waters of the Sea of Okhotsk and take us up close to witness the awe-inspiring spectacle of the region's famous drift ice. Enjoy the panoramic views of the surrounding icy landscape on this 1 hour trip. Remember to dress warmly!

→ **10:45am** — Next, let's take a special glimpse into Japan's winter culture and community life: **Wakasagi smelt fishing** on scenic Lake Abashiri. Ice-fishing (through drilled holes in the frozen lake) is a popular tradition that attracts droves of amateur and professional anglers here every winter. At this beginner friendly expedition, a professional fisherman will share tips on out maneuvering the elusive smelt fish. Afterwards, we'll get to enjoy **Wakasagi tempura-style!** This experience combines the thrills of reeling in fresh catches with the beauty of the frosty landscapes to make for an unforgettable adventure.

→ **1:00pm** — **Enjoy a Japanese-style lunch at a local restaurant.**

→ **4:00pm** — On our drive to Sounkyo, we'll make a stop at **Michinoeki Onneyu**, where we'll be greeted by dwarves in a whimsical clock tower. Here, you'll find the region's specialty lumber goods and products.

→ **5:30pm** — Time to get into the winter spirit with an excursion to the **Sounkyo Ice Waterfall Festival**. Located at the foot of Sounkyo Onsen and along the Ishikari River, this enchanting illuminated winter event brings to life impressive builds of ice and snow, ice sculptures, snow domes of popular characters, snow tubing, a multi-story ice structure, and more!

→ **6:45pm** — **Arrive at Sounkyo Choyotei Resort Hotel, followed by a buffet dinner at the hotel.**

Day 6: (Thu) Feb 4 – Sounkyo-Asahikawa (B)

JR Inn Asahikawa (Free Wi-Fi) - [Enjoy onsen](#)

→ **Breakfast at hotel.**

→ **9:00am** — **Meet your guide at the hotel lobby for a full day tour to Asahikawa.**

→ **9:45am** — Our morning begins with a step inside the enchanting snow and ice-covered world of the **Hokkaido Ice Pavilion**. After entering through a tunnel of lights and a mirror maze, we'll pick up a thick winter coat and a wet towel and proceed on to the -20°C zone of ice and giant icicle covered walls. Watch as your wet towel becomes frozen solid and stand up on its own accord! You'll also find the air glittering with "diamond dust" or tiny ice crystals that form from the moisture in the air, just as it does on particularly cold Hokkaido days. Be sure to also keep an eye out for the tank of "ice angels," beautiful and almost alien-like sea slugs with delicate wings that live under the drift ice in the sea north of Hokkaido.

→ **11:45am** — Enjoy lunch on your own at **Asahikawa Ramen Village**. Asahikawa is famous for its shoyu based broth coated with a thin layer of oil, unlike Sapporo's miso-based broth and Hakodate's salt-based broth. Asahikawa

ramen is also distinctive for its thin, hard, and wavy noodles.

→ **1:00pm** — Here we are at the **Asahiyama Zoo**, which is esteemed for its wildlife and its innovative viewing displays. Visitors can trace the flight of scops owls overhead, observe wolves and polar bears through glass display domes that put thrill-seekers at eye level with them, and much more. Most excitingly, we'll catch the winter **penguin walk!** For 30 mins, a colony of chubby penguins happily waddle through the zoo to stay fit during a season when they would otherwise be less active and accumulate fat. With over 800 animals, Asahiyama Zoo is one of the most popular attractions in the archipelago.

→ **4:00pm** — Our next visit: **Otokoyama Sake Brewery**, which was founded in 1661 and became the official sake-maker for aristocrats during the Edo period. Otokoyama garnered fame as the 1st Japanese sake to earn the prestigious "Monde Selection" award in 1977 and has won 40+ gold medals internationally since then. Otokoyama's sake is so spectacular in part because it is brewed using the underground springwater that runs deep beneath the Hokkaido mountains. In addition to learning all about Otokoyama's sake brewing process and rich heritage, you'll have time to sample their world renowned sake and browse through magnificent sake sets and cups at their gift shop.

→ **5:00pm** — **Arrive at JR Inn Asahikawa.** Our hotel is connected to the JR Asahikawa Station and a direct elevator down to the AEON Mall. The city's shopping arcade entrance is also steps away. Besides its location, the hotel offers a public bath for men and women in a semi-outdoor setting. Enjoy the evening at leisure.

Day 7: (Fri) Feb 5 – Asahikawa-Sapporo (B)

Sapporo STREAM Hotel (Free Wi-Fi)

→ **Breakfast at hotel.**

→ **9:30am** — **Meet your guide at the hotel lobby for another fun-filled day of touring.**

→ **10:00am** — This morning, a visit to the second largest winter festival after Sapporo's Snow Festival: the **Asahikawa Winter Festival**. Unique to this festival is its grandiose display of massive snow sculptures which changes its theme annually. Its 1994 construction of a Korean fortress even made it into the book of Guinness World Records as the largest snow construction built! Smaller snow sculptures that dot the grounds also capture the impressive snow architecture.

→ **12:45pm** — From here, a stop at **Sunagawa Highway Oasis**, a large candy-colored shopping center run by Hokkaido's major manufacturers. This fun spot offers many of Hokkaido's specialties such as melons, whole crabs, famous stuffed squid from Hakodate, and Royce chocolates.

Browse through souvenir items and take notice of the wooden owls and bears, which are animals the indigenous Ainu people believe the gods inhabit.

→ **3:00pm** — Later today, a fun visit to **Royce' Cacao & Chocolate Town**. This facility takes visitors through an immersive factory experience. Here, we'll learn how cocoa beans transform into chocolate bars, browse through Royce's antique collections, and delight in the baked sweets, soft serve ice cream, and 200 types of chocolate available at their on-site shop.

→ **5:30pm** — **Arrive at Sapporo STREAM Hotel**. Enjoy the evening of shopping and dining at your leisure, with plenty of options nearby.

Day 8: (Sat) Feb 6 – Sapporo (Free day) (B)

Sapporo STREAM Hotel (Free Wi-Fi)

→ **After breakfast at the hotel, enjoy your free day!**

→ A few events and activities to keep on your radar:

→ Head over to Odori Park, the main site of the **Sapporo Snow Festival**. In addition to housing the festival's famous large snow sculptures and over 100 smaller snow statues, the Odori site hosts Hokkaido specialty food stalls, as well as several concerts and events, many of which use the sculptures as their stage. Don't forget to bundle up and bring your hat and mittens!

→ Check out **Susukino Ice Sculpture**, another site of the Sapporo Snow Festival. Here, a large number of hand-carved ice sculptures are on display. Take the time to enjoy other attractions in the area too, like the Fureai Square or the Ice Bar with counters and chairs made of ice.

→ Make your way to **Sapporo Tanukikoji Shopping Street**, Sapporo's oldest (since 1868!) covered shopping arcade stretching 10 blocks with 200 stores. Here you'll find merchant stalls from the old world and the new, selling traditional goods like kimonos and tea sets alongside electronics and tech accessories. You'll also find Hawaii favorites like a multi-story Daiso, a 24-hour Mega Don Quijote, and a variety of dining options that you can browse through.

→ Or stop at **Nijo Fish Market**, which dates back over 100 years to the early Meiji period when fishermen would sell their catch along the Sosei River. Today, the market is home to many fisheries and several restaurants. Since Sapporo is the main city, this market supplies the freshest seafood from around the island. Browse the day's catch or pick up some tasty dried seafood treats.

Day 9: (Sun) Feb 7 – Sapporo-Lake Shikotsu-Chitose-Haneda-Honolulu (B)

→ **Breakfast at hotel.**

→ **8:45am** – **Meet your guide at the hotel lobby for Chitose.**

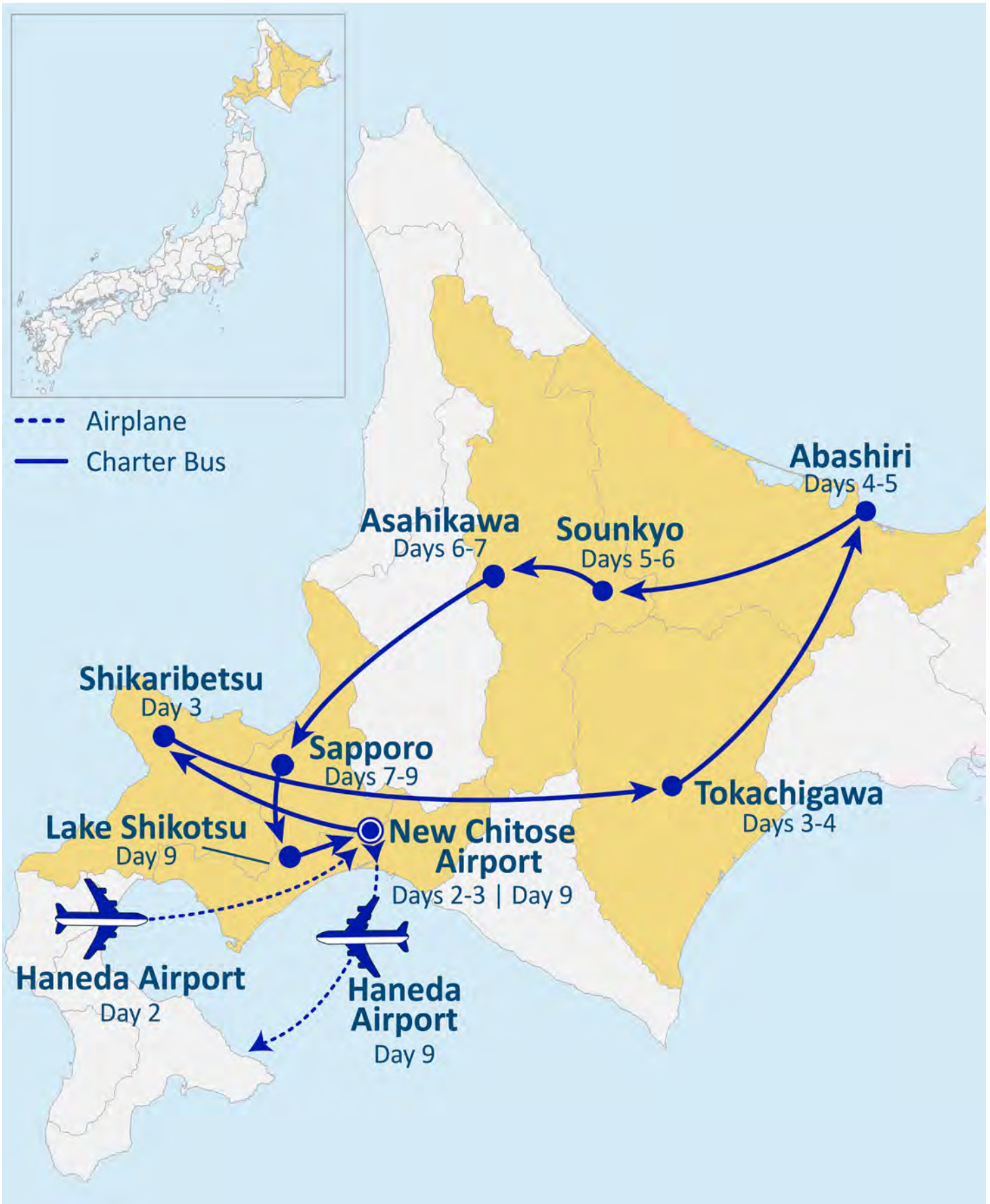
→ **10:00am** — This morning, we'll visit the **Lake Shikotsu Ice Festival**. Each year, Hokkaido transforms the ice-free lake of Lake Shikotsu into a colorful playground of impressive ice sculptures, ice slides, ice walls, and food booths. Unlike the carved ice in other festivals, the exhibits here are made from freezing sprayed water. The artists purposefully shape their creations into massive masterpieces that you can enter.

→ **12:00pm** — **Arrive at New Chitose Airport. We'll depart at 3:45pm on JAL domestic flight 516 to Haneda.**

→ **5:30pm** — **Upon arrival at Haneda, we'll transfer by shuttle to the International Terminal for JAL flight 74 at 9:00pm.**

→ **Arrive in Honolulu (same day).**

Thank you for traveling with us! 



Need to Know...



Payment Policy

- » To secure your reservation, a **\$200 per person** deposit is required. The deposit can be refunded until **October 28, 2026**. Any changes made after this date will be subject to additional fees.
- » Final payment is due by **December 9, 2026**. Package is non-refundable after this date.

* Fares and Fees (Priced in USD)

- » Are subject to change in light of fuel supplements, taxes, and differences in costs.
- » We reserve the right to change any part of the itinerary, including payment schedules, at any time and without notice.



Special Assistance

- » You must inform us of any disability/impairment that requires special attention at the time of your making the reservation.
- » We reserve the right to cancel the reservation(s) if the disability/impairment is unsuitable for the tour.
- » You are also responsible for any costs and/or accommodations related to your disability/impairment, such as providing your own travel companion.



Travel Insurance

- » We highly recommend the purchase of trip insurance. Please ask our representatives for more information.



Travel Documents

- » A valid passport is required for all U.S. citizens and must be valid and not expire at least 6 months from the return tour date.
- » Non-U.S. passport holders must check with the Japanese Consulate to see if a visa is required.



Land Tour Operator & Costs

- » Land Tour Operator is Nippon Travel Agency.
- » Land Tour costs are based on current currency conversion rates, which are subject to change.



Other remarks

- » Not Included in the tour: Gratuities for local English speaking guide; additional baggage fee charges from the airlines; alcohol and soft drinks with meals.
- » A minimum of 16 participants are required for the tour to operate.
- » You are expected to abide by domestic and international government and accommodation policies related to health, safety, and welfare.