

Join Panda Travel in...



# 2026 Exploring Summer Festivals in Japan

(GP1354I)



July 12 - 21, 2026

8 Nights/ 10 Days

*Tokyo - Atami - Mishima -  
Kyoto - Awaji - Osaka*

**\$100 OFF PER PERSON**  
on our complete package when you pay  
with a personal check/cash

☐ **\$4,498\***

per person-triple occupancy

☐ **\$4,498\***

per person-double occupancy

☐ **\$5,398\***

single occupancy

[pandaonline.com](http://pandaonline.com)

(808) 734-1961

1017 Kapahulu Ave, Honolulu, HI 96816

A minimum of 16 participants is  
required for the tour to operate

# Itinerary

## Day 1: (Sun) Jul 12 – Honolulu Depart Honolulu via Hawaiian Airlines

→ Meet the Panda Travel representative 3 hrs prior to departure at the airline's check-in counters.

## Day 2: (Mon) Jul 13 – Haneda-Tokyo Sunshine City Prince Hotel (Free Wi-Fi)

→ Arrive at Haneda Airport. Meet your local English speaking guide at the arrival lobby. We'll transfer to **Sunshine City Prince Hotel**, our accommodations for the next 2 nights. Our hotel is directly connected to Sunshine City shopping center with many shopping and dining options available to you. Nearby, you'll also find a 24-hr Family Mart convenience store and a Seiyu supermarket for snack, bento, and beverage pickups. Enjoy your evening at leisure.

## Day 3: (Tue) Jul 14 – Tokyo (B) Sunshine City Prince Hotel (Free Wi-Fi)

→ Breakfast at hotel.

→ 10:00am – Meet your guide at the hotel lobby.

→ 10:30am – Our morning begins with lively **Sugamo Jizo Shopping Street**. Today is a special **festival day** – occasions that exclusively take place on dates ending in a "4" – and we are treated to a lively array of local food and snack vendors that line the street. Affectionately called "Grandma's Harajuku," this half-mile arcade boasts over 200 shops specializing in goods seniors will love. From brand-name products to comfortable shoes and clothes at Takeshita-like bargain prices, you'll find it all here. The most notable item is aka-pantsu (red underwear), believed to improve health, ward off evil spirits, and bring happiness.

→ 12:15pm – We'll now explore **Asakusa**, a famous district that melds the culture and traditions of ancient Tokyo with the metropolitan styles of modern Japan. It's also home to Japan's first cinema!

→ Step into Asakusa's renowned **Sensoji Temple** and **Kaminarimon Gate** (aka "Thunder Gate") with its massive lantern. This spot is a "must see" in every guidebook and boasts over 30 million annual visitors. Traditionally, as a show of respect, visitors clap twice and bow their heads once they reach the top of the temple steps. With the belief that coins trap the dangers of daily life, visitors also customarily make a small offering by tossing coins into a wooden rack, tossing away those dangers as well.

→ You'll also find the **Five Storied Pagoda** there. Regarded as one of the "Four Edo Pagodas," this nearly 174 foot monument stands to represent Tokyo's few remaining

pagodas. The temple grounds also include the **Nakamise Shopping Arcade**, an exciting and extensive shopping street lined with good luck charms, traditional goodies, and Japanese snacks.

→ 2:15pm – Next, a stop at **Tokyo Solamachi**. Located at the base of Japan's tallest structure, Tokyo Sky Tree, this large shopping, dining, and entertainment complex features over 300 establishments.

→ 4:00pm – Afterwards, a visit to **Ameyoko Shopping Street**. This is the absolutely perfect place to get your omiyage. "Ameyoko" is short for "Ameya Yokocho" or "candy shop back alley" since candies were traditionally sold there. Alternatively, it is short for "America," a callback to the post-WWII era when American products were sold there illegally. Today, the street is lined with over 400 shops from cooked street food, snacks like dried squid, and fresh seafood to clothes, bags, accessories, cosmetics, and much more!

→ 6:00pm – This evening, we'll attend **Yasukuni Shrine's** annual **Mitama Matsuri**, one of Tokyo's largest Obon festivals. Amidst the glow of 30,000 paper lanterns, visitors celebrate with festival foods, games, and dazzling dance and taiko drum performances.

→ 7:45pm – Return to hotel. Enjoy the evening of shopping and dining on your own.

## Day 4: (Wed) Jul 15 – Tokyo-Atami (B/D)

Atami Korakuen Hotel, Aqua Square (Free Wi-Fi) - Enjoy onsen

→ Breakfast at hotel.

→ Please leave your suitcase(s) (2 pcs per person) at the hotel and prepare an overnight bag for 1-day. A courier service will deliver our suitcase(s) from Tokyo to our Kyoto hotel.

→ 8:45am – Meet your guide at the hotel lobby for a full day tour to Atami.

→ 9:30am – Today begins at the iconic **Tsukiji Outer Market**. A renowned bucketlist spot, Tsukiji is the largest fish market in the world. While the inner auction market relocated to Toyosu in 2018, the charm remains in its outer market. Be sure to enjoy all that the outer market has to offer, from seasonal produce and candy tasting to knife-making artisan shops.

→ We'll now drive to Atami.

→ 1:30pm – Explore and enjoy lunch on your own at **Atami Heiwa-dori Shopping Arcade**, a historic district featuring a mix of contemporary stores and long-established shops from the 60s and 70s. Teeming with nostalgia, this shopping street offers cafes, sushi stalls, speciality items from the Izu Peninsula, and more! Tip: sample their famous onsen

manju (hot spring bun).

→ **3:30pm – Arrive at Atami Korakuen Hotel, followed by a buffet dinner at 5:30pm.** Located on the eastern coast of the Izu peninsula, this famous onsen resort features stunning natural views and a large onsite onsen overlooking beautiful Sagami Bay. It's no wonder celebrities frequent this resort!

→ **6:30-9:30pm** – Tonight, we'll attend one of Atami's most highly anticipated events: **Atami Kogashi Matsuri**. Excitingly, colorful and ornate wooden festival floats representing each town parade through a traffic restricted National Route 135 and compete for a grand prize.

---

### **Day 5: (Thu) Jul 16 – Atami-Mishima-Kyoto (B/L)**

Miyako Hotel Kyoto Hachijo (Free Wi-Fi)

→ **Breakfast at hotel.**

→ **9:00am – Meet your guide at the hotel lobby.**

→ **9:30am** – Our morning begins at **MOA Museum of Art** which houses an impressive collection of centuries old Japanese and East Asian art, including three national treasures and many important cultural works. Not to be missed are warlord Toyotomi Hideyoshi's reconstructed gold tea ceremony room and the onsite serene Japanese style garden.

→ **11:15am** – Along the way, shop and taste Izu's finest at the **Izu Wasabi Museum**. Here, visitors can discover the manufacturing process of specialty products like certified Mishima brand Nohei Pickles.

→ **12:15pm** – Now a visit to **Mishima SkyWalk**, the longest suspension bridge in Japan. At this landmark, pedestrians are treated to unobstructed views of Mt. Fuji and Suruga Bay. Visitors may also come across 10,000 hydrangeas of 170 varieties in bloom on the "Hydrangea Trail." You might even spot the "Skywalk special," a variety of hydrangea originating from and exclusive to this area!

→ **1:30pm** – Enjoy a **Japanese-style lunch** at a local restaurant. Don't miss out on the **melon tasting**.

→ **3:46pm** – Afterwards, we'll hop on a **bullet train** departing from Mishima Station and head to Kyoto.

→ **5:37pm** – Upon reaching Kyoto Station, we will walk to our hotel.

→ **6:00pm** – Arrive at **Miyako Hotel Kyoto Hachijo**, our accommodations for the next 2 nights. Conveniently located across the street from the Kyoto JR Station and around the corner from an Aeon Mall, you'll find a wide variety of food and shops in every direction.

---

### **Day 6: (Fri) Jul 17 – Kyoto (B)**

Miyako Hotel Kyoto Hachijo (Free Wi-Fi)

→ **Breakfast at hotel.**

→ **9:00am – Meet your guide at the hotel lobby for a full day tour in Kyoto.**

→ **9:30am** – Our morning begins with a hands-on **Tote bag dyeing experience** at the Marumasu Nishimuraya.

→ **10:40am** – We'll then head to the **Gion Festival**, one of the "Three Great Festivals of Japan" and the nation's largest celebration. This vibrant festival is known for its extravagant floats, ravishing performances, and electrifying parade procession. What an exhilarating way to start the day!

→ **12:30pm** – Here we are at **Arashiyama**, an area heavily influenced by Buddhism. Situated on the outskirts of Kyoto, this picturesque destination boasts an abundance of natural beauty and a wealth of cultural heritage. A few suggestions for exploring this tranquil area:

→ Venture into the internationally recognized cultural and stunning landmark, **Sagano Bamboo Path**. Rooted in Japanese belief, bamboo has the power to ward off evil and deliver good fortunes, protecting the nearby Buddhist temples and Shinto shrines. Wander around and marvel at the soaring stalks of bamboo that surround you.

→ Or make a half an hour uphill hike to reach **Iwatayama Monkey Park**. There, you'll find mischievous monkeys scurrying about in their natural habitat or munching on a bag of apples that visitors can purchase. Another benefit of making this trek is the astounding panoramic views of Kyoto atop.

→ If you want to grab a bite to eat, try **yūdofu** (simmered tofu), a local Arashiyama specialty that highlights Buddhist vegetarian cuisine.

→ If **shopping** is on your to-do-list, there are plenty of shops to collect items like traditional fans, bamboo goods, and specialty snacks. This is also a great opportunity for you to take a break from walking and hitch a ride on a **rickshaw**!

→ **4:00pm – Return to hotel.** Enjoy the evening of shopping and dining on your own.

---

### **Day 7: (Sat) Jul 18 – Kyoto-Awaji (B/L/D)**

Grand Mercure Awaji Island Resort & Spa (Free Wi-Fi) - **Enjoy onsen**

→ **Breakfast at hotel.**

→ **8:15am – Meet your guide at the hotel lobby for a full day tour to Awaji.**

→ **9:15am** – Our morning begins with a **hands-on Daruma painting** workshop at **Katsuoji Temple**, a temple of luck as prayers made here have healed emperors and helped shoguns become victorious in their conquests. Today, visitors flock to pray for luck with business, academics,



sports, and more.

Beyond the idyllic beauty of the temple, visitors will see countless daruma dolls strewn throughout the temple grounds. With roots in Buddhism, these good-luck daruma charms inspire perseverance and ward off evil. Traditionally, one paints the left eye to make a wish or set a goal, and the right eye is painted when the wish or goal is fulfilled. The one-eyed doll serves as emotional support and a motivating reminder to keep moving forward, a great personalized memento to take home.

→ **12:15pm** – Next, we'll head over to the picturesque **Awaji Hanasajiki Flower Park**, the site of approx. one million flowers that change with the seasons.

→ **3:15pm** – After a **western-style lunch** at a local restaurant, we'll visit **Takosenbei no Sato**, a famous factory and shop specializing in over 40 unique varieties of snacks that incorporate ingredients from the sea. Their thinly-baked Tako-usu Yaki rice crackers (squid, octopus, and shrimp) is the most popular-give it a try!

→ **4:45pm** – **Arrive at Grand Mercure Awaji Island Resort & Spa**, followed by a **6:30pm Japanese-style dinner** at the hotel. After dinner, take some time to unwind at the onsite indoor and open-air onsens.

---

#### **Day 8: (Sun) Jul 19 – Awaji-Osaka (B/L)**

Hotel Monterey Grasmere Osaka (Free Wi-Fi)

→ **Breakfast at hotel.**

→ **9:00am** – **Meet your guide at the hotel lobby for Osaka.**

→ **9:30am** – This morning, we'll delve into Japan's artistic history through the detailed craftsmanship and cultural stories embedded in each doll at **Awaji Ningyoza Puppet Museum**. Following our museum visit, we'll attend a captivating **Ningyo Show**.

→ **11:30am** – Arrive at Naruto city, where we'll board the famous **Uzushio Kancho Cruise - Wonder Naruto**. **Naruto's whirlpools** appear as large, shifting swirls on the surface of the water and occur roughly every 6 hours. It is due to this location's special underwater geography and its narrow strait that we can view this unique phenomenon.

→ The **cruise** will take us out on the water to view the formations from a safe height, and although we'll get right up to the whirlpools, the boats are very stable. If you prefer to stay off the boat, not a problem: the cruise pickup and dropoff point offers a waiting area with food and shopping facilities.

→ **12:45pm** – **Enjoy a Japanese-style lunch at a local restaurant.**

→ **2:15pm** – Now a visit to the **Uzu no Oka Onaruto Bridge Memorial Museum**, a multifaceted facility built to honor the completion of the Onaruto Bridge. The complex includes: the Whirlpool Science Center; an observation-

deck restaurant where you can savor delectable cuisine made with locally sourced Awaji Island ingredients; and a gift shop, offering a variety of Awaji Island souvenirs and other unique goods for purchase. Don't forget to get a photo in front of the life-sized star agricultural product of Awaji: "Otama Onion."

→ **5:00pm** – **Arrive at Hotel Monterey Grasmere Osaka.**

Welcome to Osaka, Japan's third-largest city and a hub of commerce. The citizens speak the Kansai dialect and are known for their outgoing nature. Osaka is also known for its vibrant street life, shopping arcades, markets, and byways. Enjoy the evening exploring this exciting city at leisure.

---

#### **Day 9: (Mon) Jul 20 – Osaka-Free day at leisure (B)**

Hotel Monterey Grasmere Osaka (Free Wi-Fi)

→ **Breakfast at hotel.**

→ **The day is yours to explore Osaka!**

→ Here are some notable spots: Dotonbori and Shinsaibashi Shopping Arcade (a short walk from the hotel); Sennichimae Doguyasuji; Kuromon Market; and Osaka Castle.

---

#### **Day 10: (Tue) Jul 21 – Osaka-Kansai-Honolulu (B)**

→ **Breakfast at hotel.**

→ **9:30am** – **Meet your guide at the hotel lobby to start our tour in Osaka.**

→ **10:00am** – Ever wonder how the mouthwatering food displayed in restaurant windows are made to look so lifelike? Let's find out at the interactive **"food sample" making workshop**, where you'll handcraft your very own realistic foods.

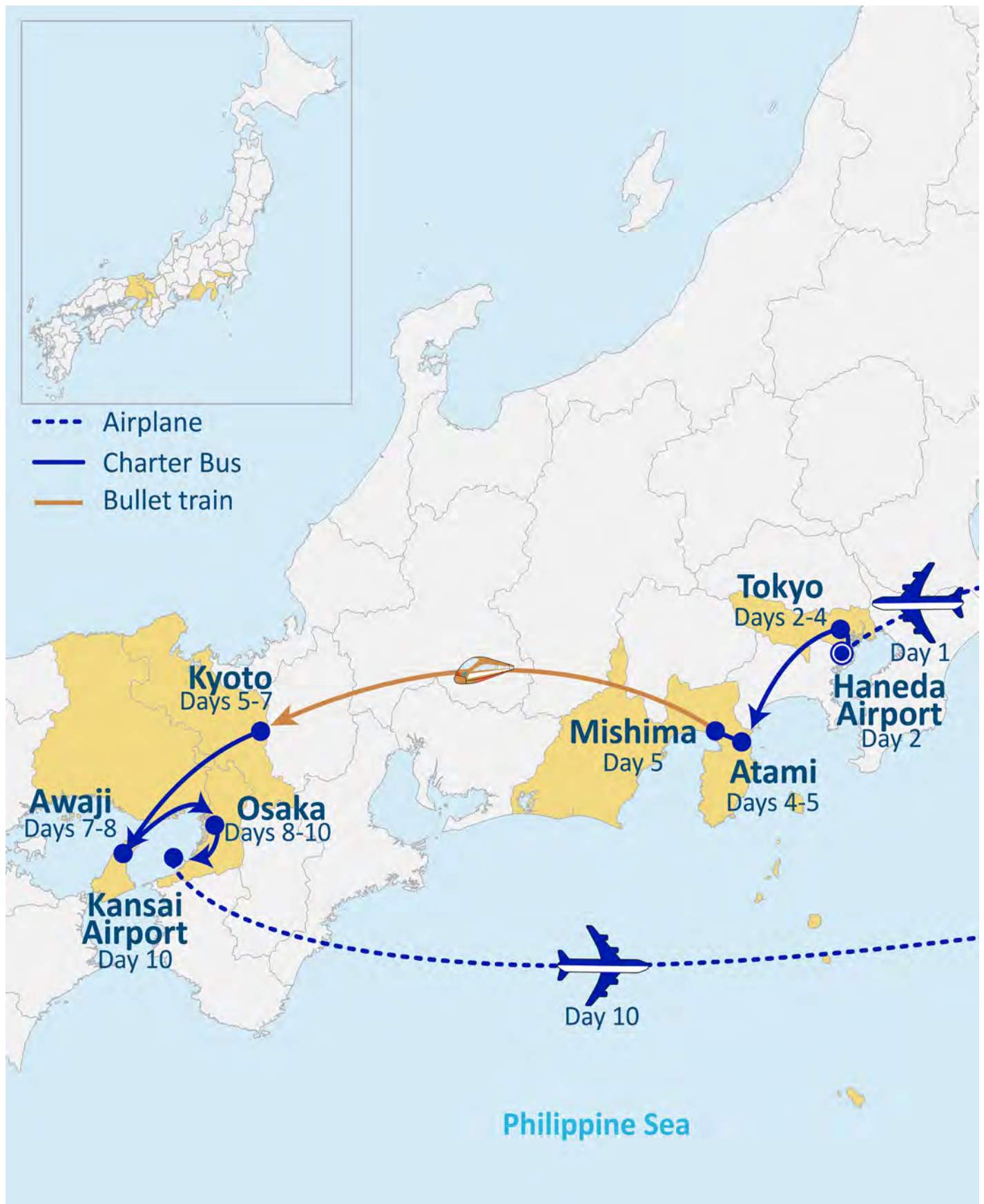
→ **11:15am** – Now, visit the bustling **Kuromon Market!** Also known as the "Kitchen of Osaka," this famous 190 year old market is a popular spot for locals, and a go-to destination for many of the city's chefs to gather their supplies. With over a hundred vendors, the market offers a wide variety of fresh and local produce, seafood, meats, sweets, and other traditional Japanese foods. Enjoy lunch on your own.

→ **3:00pm** – Our next visit: **LaLaport Kadoma/Mitsui Outlet Park Osaka Kadoma/Costco Kadoma**, the first ever shopping complex in Japan to combine these malls under one roof!

→ **Transfer to Kansai International Airport for our flight home!**

→ **Arrive in Honolulu (same day).**

**Thank you for traveling with us!** 



# Need to Know...



## Payment Policy

- » **To secure your reservation, a \$150 per person deposit is required. The deposit can be refunded until April 7, 2026.**
- » **Final payment due by May 13, 2026. Package is non-refundable after this date.**



## Fares and Fees (Priced in USD)

- » Are subject to change in light of fuel supplements, taxes, and differences in costs.
- » Air ticket fare is guaranteed, but taxes, fees, and fuel surcharges are subject to change until tickets are issued.
- » We reserve the right to make changes to the itinerary with or without notice.



## Special Assistance

- » You must inform us of any disability/impairment that requires special attention at the time of your making the reservation.
- » We reserve the right to cancel the reservation(s) if the disability/impairment is unsuitable for the tour.
- » You are also responsible for any costs and/or accommodations related to your disability/impairment, such as providing your own travel companion.



## Travel Insurance

- » We highly recommend the purchase of trip insurance. Please ask our representatives for more information.



## Travel Documents

- » A valid passport is required for all U.S. citizens and must be valid and not expire at least 6 months from the return tour date.
- » Non-U.S. passport holders must check with the Japanese Consulate to see if a visa is required.



## Land Tour Operator & Costs

- » Land Tour Operator is Nippon Travel Agency.
- » Land Tour costs are based on current currency conversion rates, which are subject to change.



## Other remarks

- » Not Included in the tour: Gratuities for local English speaking guide; additional baggage fee charges from the airlines; alcohol and soft drinks with meals.
- » A minimum of 16 participants are required for the tour to operate.
- » You are expected to abide by domestic and international government and accommodation policies related to health, safety, and welfare.