

Join Panda Travel in...



# 2026 Hokkaido Summer Explorer

(GP135I5)



Jun 5 - 14, 2026

8 Nights/10 Days

*Haneda - Hakodate - Noboribetsu - Tomamu  
- Sapporo - Hoheikyo - Jozankei - Otaru*

**\$100 OFF PER PERSON**  
on our complete package when you  
pay with a personal check/cash

*JAL Economy Class*

☐ **\$4,088\***

pp double/triple occupancy

☐ **\$4,988\***

single occupancy

*JAL Premium Economy Class*

☐ **\$5,388\***

pp double/triple occupancy

☐ **\$6,188\***

single occupancy

pandaonline.com

(808) 734-1961

1017 Kapahulu Ave, Honolulu, HI 96816

**A minimum of 16 participants is  
required for the tour to operate**

# Itinerary

## Day 1: (Fri) Jun 5 – Honolulu Depart Honolulu via Japan Airlines

→ Meet the Panda Travel representative 3 hours prior to departure at the airline's check-in counters.

## Day 2: (Sat) Jun 6 – Haneda Airport

Hotel JAL City Haneda Tokyo West Wing (Free Wi-Fi)

→ Arrive at Haneda Airport. Meet your English speaking local assistant at the arrival lobby and we'll then transfer to **Hotel JAL City Haneda Tokyo West Wing**, our accommodations for the night.

## Day 3: (Sun) Jun 7 – Haneda-HKD-Hakodate (B)

La Vista Hakodate Bay (Free Wi-Fi) - Enjoy onsen

→ Breakfast at hotel.

→ 7:30am – Depart Haneda to Hakodate via Japan Airlines (JL 585).

→ 8:50am – Welcome to Hakodate, a scenic city located in southern Hokkaido, renowned for its stunning views from Mount Hakodate and its reputation as a haven for seafood enthusiasts. Upon arriving at Hakodate Airport, meet your English-speaking local guide at the arrival lobby. From there, we'll proceed to begin our tour for Hakodate.

→ 10:00am – This morning, we'll visit **Goryokaku Tower & Park**. The tower's observatory overlooks Goryokaku, the star shaped fortress built by the Shogunate in 1857 to protect northern Japan. You can also explore the beautiful surrounding scenery that changes with the seasons.

→ 12:00pm – Enjoy lunch on your own at **Hakodate Morning Market**. Spanning 4 city blocks, this bustling marketplace of 250 stalls sells everything from fresh seafood, fruits, and vegetables to regional delicacies and souvenirs.

→ 2:00pm – Time to get creative with an exciting **hands-on experience**; craft your own **sandblasting glass pieces** and take home this nice memento of your vacation to Japan!

→ 3:45pm – Arrive at **La Vista Hakodate Bay**. This onsen hotel features 6 types of hot spring baths with spectacular night views of Hakodate. It's also located on the waterfront of the **Kanemori Red Brick Warehouse District**, a vibrant shopping and entertainment hub that earned a spot on the Michelin Green Guide!

→ 7:00pm – After dinner on your own, meet your guide at the hotel lobby for **Mt. Hakodate!**

→ 7:15pm – Now a ride on the famous **Hakodate Ropeway**. Our cable car will take us to the Mt. Hakodate observatory, where panoramic views are so stunning that it earned a 3 star recommendation from the Michelin Green Guide—the

highest rank!

→ 8:30pm – Return to hotel. Enjoy the evening at leisure.

## Day 4: (Mon) Jun 8 – Hakodate-Noboribetsu (B/D)

Iwainoyado Noboribetsu Grand Hotel (Free Wi-Fi) - Enjoy onsen

→ Breakfast at hotel.

→ 8:30am – Meet your guide at the hotel lobby before our drive to Noboribetsu, known for its natural beauty and rejuvenating hot springs.

→ 9:30am – Our morning begins at **Michino-eki Shikabe Kanketsusen Park**, the home of an incredible geyser that spouts over 50 ft of volcanic steam at 10-15 min intervals.

→ Now, a drive to the Lake Toya area, including a rest stop along the way.

→ 1:00pm – Get ready to explore **Showa Shinzan**. Born from Mount Usu's 1943 volcanic eruption and named after Emperor Showa, this young lava dome rapidly emerged from what was once a flat wheat field and still vents sulfurous fumes. Enjoy some free time for lunch at this UNESCO Geopark.

→ 3:00pm – Later today, experience a sightseeing **boat cruise on Lake Toya**. Located at the center of Toya-Usu UNESCO Global Geopark, scenic Lake Toya features gorgeous scenery, wildlife, and natural landscapes. The lake was also designated as one of Japan's Top 100 Tourist Sites! During our leisurely cruise, be on the lookout for the wild ezo deer inhabiting Nakanoshima Island and the seagulls soaring above.

→ 5:00pm – Arrive at **Iwainoyado Noboribetsu Grand Hotel**, followed by a buffet dinner at 6:30pm. Tonight's hotel is one of Japan's leading onsen resorts, having even previously provided lodging for a Japanese Emperor and Empress. Be sure to check out the various onsite hot spring amenities like an open-air Japanese garden bath with waterfalls, a Roman style bath, and more.

## Day 5: (Tue) Jun 9 – Noboribetsu-Tomamu (B)

Hoshino Resort Tomamu (Free Wi-Fi)

→ Breakfast at hotel.

→ 9:00am – Meet your guide at the hotel lobby for Noboribetsu.

→ 9:15am – Our morning begins with a visit to **Noboribetsu Jigokudani**, an otherworldly land of bubbling hot waters, steaming pools, and bleached rocks. Beloved by the Hokkaido people and recognized as a "Hokkaido Heritage" site, this productive crater feeds 10,000 tons of natural hot spring waters to onsen hotels and resorts in the area daily.

→ **10:30am** – Now a trip back in time to historic Japan at the **Noboribetsu Date Jidaimura Village**, a charming Edo Period theme park with replica Edo-era architecture, traditional games and activities, and costumed ninjas, samurais, and geishas strolling the village streets. And at 11:30am, we'll catch an exhilarating live **Ninja show!** Enjoy lunch on your own and an afternoon of wandering through samurai exhibits and outwitting the tricks and traps of the kid-friendly Ninja Maze.

→ **1:45pm** – Afterwards, a visit to **Upopoy National Ainu Museum and Park**, Japan's first national museum dedicated to the indigenous Ainu people of northern Japan. At this facility, we'll learn about the rich and vibrant Ainu culture through hundreds of native artifacts, a replica Ainu village, and more! At 3pm, enjoy a traditional **Ainu performance**.

→ From here, we'll drive to Tomamu.

→ **5:30pm** – Check in at **Hoshino Resort Tomamu** and enjoy a leisurely evening—relax, explore the resort, or take a stroll. For dinner, check out one of the on-site restaurants (dinner is on your own) and savor the regional flavors at your own pace.

---

#### **Day 6: (Wed) Jun 10 – Tomamu-Sapporo (B)**

Mercure Hotel Sapporo (Free Wi-Fi)

→ **5:00-8:00am** – The highlight of Hoshino Resorts Tomamu is **Unkai Terrace**. At 1,088 meters high, this popular observation deck offers lucky visitors breathtaking early morning views of the “sea of clouds” (unkai), a natural phenomenon in which a vast expanse of clouds rolls in beneath the viewing area. This 3-story deck also features Cloud Walk and Cloud Pool, unique structures that make for a surreal experience. Visitors can access the terrace via a gondola ride from the Hoshino Resorts Tomamu Resort Center, which takes approx. 13 mins (weather-dependent).

→ **Breakfast at hotel.**

→ **9:30am** – Meet your guide at the hotel lobby for **Sapporo**.

→ **10:45am** – Along the way, we'll stop by **Yubari Melon Dome**, a delightful spot that celebrates local agriculture and community. Here, you'll discover the famous Yubari melon through informative displays on its history and cultivation, which have become a symbol of Hokkaido. Visitors also have the opportunity to taste fresh melons and explore a variety of delicious melon-themed products.

→ **12:45pm** – Here we are at **Sapporo Central Wholesale Market (Jogai)**, renowned for its fresh fish and produce in Japan. Explore the “Curb Market” with around 60 stores selling everything from fruits to seasonal goods. Beyond its culinary delights, Jogai also showcases the vibrant culture

and lifestyle of Sapporo, serving as a lively gathering place for locals, chefs, and restaurateurs.

→ **2:15pm** – From here, we'll visit **Shiroi Koibito Park**, a whimsical theme park by Ishiya, famous for its chocolate treats! Don't miss the buttery cookie sandwiches with white chocolate—perfect Sapporo souvenirs.

Then, unwind with a stroll through the beautiful **Rose Garden** filled with vibrant blooms and a serene atmosphere.

→ **3:45pm** – Arrive at **Mercure Hotel Sapporo**, our accommodations for the next 4 nights. The hotel is located just a short walk away from **Sapporo's Tanukikoji Shopping Street**, the city's oldest covered shopping arcade dating back to 1868. Stretching for 10 blocks, the Tanukikoji features over 200 stores, making it a vibrant hub for shopping, dining, and entertainment in the heart of Sapporo. Enjoy the evening at leisure.

---

#### **Day 7: (Thu) Jun 11 –**

#### **Sapporo-Hoheikyo-Jozankei-Sapporo (B/L)**

Mercure Hotel Sapporo (Free Wi-Fi)

→ **Breakfast at hotel.**

→ **8:30am** – Meet your guide at the hotel lobby for **Jozankei**.

→ **9:45am** – Our day begins at **Hoheikyo Dam**, an impressive concrete structure situated on the Toyohira River in Shikotsu Toya National Park. More than a means of managing the region's flood control, irrigation and hydroelectric power generation, this landmark boasts stunning natural views and draws sightseers eager to visit from June to October, especially during the autumn foliage.

→ **11:00am** – Take a leisurely stroll through the scenic area, starting with the **Jozankei Futami Suspension Bridge**, which provides panoramic views of the lush landscape.

Then, head to **Gensen Park**, known for its natural hot springs and serene environment. In 2005, it won the “Minister of Land, Infrastructure, Transport and Tourism Award” at the Green Design Awards, recognizing its dedication to sustainable design and environmental conservation.

→ **2:00pm** – After a **buffet lunch** at a local restaurant, time for a fun and engaging hands-on experience: **handkerchief dyeing**.

→ **3:45pm** – Now visit the **Sapporo Beer Museum**, the first and only “beer museum” in Japan since the 1850s. We'll learn about the history and the process of beer-making.

→ **5:00pm** – **Return to hotel**. The remainder of the evening is yours at leisure.



## Day 8: (Fri) Jun 12 – Sapporo-Otaru-Sapporo (B)

Mercure Hotel Sapporo (Free Wi-Fi)

→ Breakfast at hotel.

→ **9:00am – Meet your guide at the hotel lobby for a full day tour to Otaru**, which is known for its rich history and picturesque canals. Originally built in the late 19th century, the canal served as a bustling trade route for transporting goods. Today, it is a charming and scenic area lined with historic warehouses that have been converted into shops, restaurants, and museums.

→ **10:00am** – Dating back to 1885, **Tanaka Sake Brewery** is a cultural landmark in Otaru. Unlike most breweries in Japan, it features stone masonry warehouses, which insulate against Hokkaido's cool climate and create ideal brewing conditions for year-round sake production. In addition, the brewery draws pure water from the underground snowmelt of Mt. Tengu, enhancing the quality of its brew. We'll learn more about this process and sample what many regard as Japan's best sake.

→ **11:00am** – Have fun and grab lunch on your own at **Otaru Sakaimachi Street**, an avenue lined with Otaru's famous glassworks, music boxes, and sweet shops. As you near the end of Sakaimachi Street, you'll come across the **Music Box Museum's** renowned vintage clock. The museum houses 15,000 music boxes playing a variety of sounds including classical concertos, hits from the Beatles, and the latest J-pop tunes. Another must visit is the **Kitaichi Glass Shop**, which was once a glass supplier for the Otaru fishing community and is now a store filled with beautiful glassworks.

For a sweet time, visit the **Kitakaro confectionery shop** and try the famous multi-layered honey wheeled cakes that have a cult-like following. Try a soft serve cone from **Yamanaka Dairy Farm**, or sample fresh local seafood at one of the many restaurants in the area. **LeTAO Plus**, a memorable sweet shop, has 50 varieties of cakes and sweets, a cafe on the 2nd floor, and a free observatory on the 3rd floor.

→ **3:00pm** – Onto our next adventure: **Royce' Cacao & Chocolate Town**. This facility (launched in Nov 2022) takes visitors through an immersive factory experience. Here, we'll learn how cocoa beans transform into chocolate bars, browse through Royce's antique collections, and delight in the baked sweets, soft serve ice cream, and 200 types of chocolate available at their on-site shop.

→ **5:15pm – Return to hotel**. Enjoy the evening at leisure.

## Day 9: (Sat) Jun 13 – Sapporo-Free Day at Leisure (B)

Mercure Hotel Sapporo (Free Wi-Fi)

→ **Breakfast at hotel**. Enjoy your free day to explore Sapporo!

## Day 10: (Sun) Jun 14 –

Sapporo-Chitose-Haneda-Honolulu (B)

→ Breakfast at hotel.

→ **10:00am – Meet your guide at the hotel lobby for Chitose.**

→ **10:30am** – This morning, a visit to **Okurayama Ski Jump Stadium**. Constructed in 1931, the stadium was home to the 90m ski jump competition during the 1972 Sapporo Winter Olympic Games and is still used for competitions today.

Together, we'll **ride a ski lift** to the peak where a viewing lounge will provide us with a spectacular view of Sapporo, the Ishikari Plain, and Ishikari Bay. This is also the ideal location to see the starting line of the ski jump - look below at the steep slope to put yourself in the skiers' boots right before they begin their jumps!

→ **12:00pm** – On our way to the airport, we'll stop at **AEON Mall Sapporo Hassamu**, a sprawling shopping center full of clothing shops, specialty stores, restaurants and more.

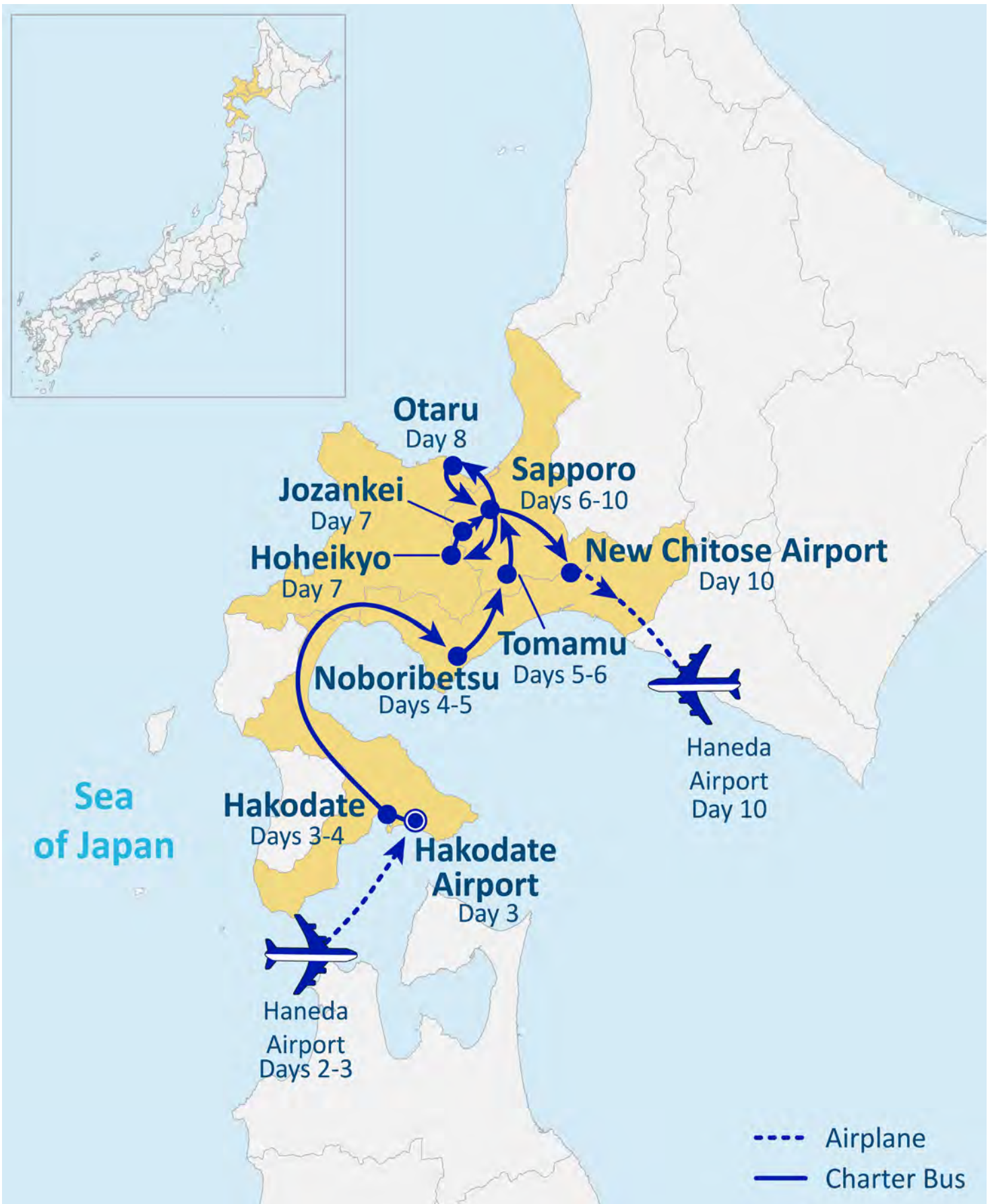
→ **2:30pm** – **Arrive at New Chitose Airport**, round up any last minute shopping at the airport terminal.

→ **6:00pm** – **Depart from Chitose to Haneda Airport via Japan Airlines domestic flight (JL522).**

→ **7:40pm** – **After arriving at Haneda, we'll take a shuttle to Terminal 3 for our flight home.**

→ **Arrive in Honolulu (same day).**

Thank you for traveling with us! 



# Need to Know...



## Payment Policy

- » **To secure your reservation, a \$150 per person deposit is required. The deposit can be refunded until March 2, 2026.**
- » **Final payment due by April 3, 2026. Package is non-refundable after this date.**



## Fares and Fees (Priced in USD)

- » Are subject to change in light of fuel supplements, taxes, and differences in costs.
- » Air ticket fare is guaranteed, but taxes, fees, and fuel surcharges are subject to change until tickets are issued.
- » We reserve the right to make changes to the itinerary with or without notice.



## Special Assistance

- » You must inform us of any disability/impairment that requires special attention at the time of your making the reservation.
- » We reserve the right to cancel the reservation(s) if the disability/impairment is unsuitable for the tour.
- » You are also responsible for any costs and/or accommodations related to your disability/impairment, such as providing your own travel companion.



## Travel Insurance

- » We highly recommend the purchase of trip insurance. Please ask our representatives for more information.



## Travel Documents

- » A valid passport is required for all U.S. citizens and must be valid and not expire at least 6 months from the return tour date.
- » Non-U.S. passport holders must check with the Japanese Consulate to see if a visa is required.



## Land Tour Operator & Costs

- » Land Tour Operator is Nippon Travel Agency.
- » Land Tour costs are based on current currency conversion rates, which are subject to change.



## Other remarks

- » Not Included in the tour: Gratuities for local English speaking guide; additional baggage fee charges from the airlines; alcohol and soft drinks with meals.
- » A minimum of 16 participants are required for the tour to operate.
- » You are expected to abide by domestic and international government and accommodation policies related to health, safety, and welfare.