

Join Panda Travel in...



# 2026 Kyushu Memorial Day Omiyage Tour

(GPI3500)



May 18 - 25, 2026

6 Nights/ 8 Days

*Haneda - Hakata - Hita - Beppu - Arita -  
Unzen - Shimabara - Kumamoto - Fukuoka*

**\$100 OFF PER PERSON**  
on our complete package when you  
pay with a personal check/cash

**JAL Economy Class:**

☐ **\$3,288\***

per person-double/triple occupancy

☐ **\$3,888\***

single occupancy

**JAL Premium Economy Class:**

☐ **\$4,688\***

per person-double/triple occupancy

☐ **\$5,288\***

single occupancy

pandaonline.com

(808) 734-1961

1017 Kapahulu Ave, Honolulu, HI 96816

**A minimum of 16 participants is  
required for the tour to operate**

# Itinerary

## Day 1: (Mon) May 18 – Honolulu Depart Honolulu via Japan Airlines 73

→ Meet the Panda Travel representative 3 hours prior to departure at the airline's check-in counters.

---

## Day 2: (Tue) May 19 – HND-Fukuoka-Hakata (D)

ANA Crowne Plaza Hotel Fukuoka (Free Wi-Fi)

→ 3:55pm – After arriving at **Haneda Airport**, we'll take a shuttle bus to the domestic terminal. A Japanese-style **bento box** will be provided along the way.

→ 6:45pm – **Depart Haneda to Fukuoka (FUK) via Japan Airlines domestic flight (JL331).**

→ 8:40pm – Upon arrival at **Fukuoka Airport**, meet your local English speaking guide at the arrival lobby. We will then transfer to the **ANA Crowne Plaza Hotel Fukuoka**. The hotel is a short walk from JR Hakata Station, where you'll find major department stores like Hankyu, HANDS, the Kitte shopping mall as well as a large Daiso. There are also many nearby dining options. We'll be staying here for four nights.

---

## Day 3: (Wed) May 20 – Hakata (B)

ANA Crowne Plaza Hotel Fukuoka (Free Wi-Fi)

→ Breakfast at hotel.

→ 9:00am – **Meet your guide at the hotel lobby for Fukuoka.**

→ 9:45am – Start the day with a visit to **Dazaifu Tenmangu Shrine**. With over 2 million annual visitors during the first 3 days of the New Year, this sacred site is a Fukuoka must visit. The shrine is dedicated to Sugawara no Michizane, "the god of academic achievements," and is a popular spot for Japanese youths from all over the country to pray for success during exam season. In addition to shops, the shrine's grounds include red-painted and ornate bridges that stretch over a pond designed in the shape of the Japanese character for "heart".

→ 12:00pm – From here, a visit to the **Hakata Machiya Folk Museum**, to learn some of this ancient city's history. Hakata is one of Japan's oldest cities and served as a link to continental Asia in pre-modern times. While the museum is small, it is well worth the visit. See a sample of traditional architecture and an exhibition hall with all beautiful artifacts that help illuminate the history of this fascinating city.

→ 1:15pm – With a history spanning over 130 years, **Nakasu Kawabata Shopping Arcade** was the first merchant area in Hakata district which now hosts over

130 stores, ranging from traditional to modern, offering a vibrant array of apparel shops, restaurants, and specialty stores.

→ 3:00pm – **Return to hotel.** The remainder of the afternoon is yours at leisure.

---

## Day 4: (Thu) May 21 – Hakata-Hita-Beppu-Hakata (B/L)

ANA Crowne Plaza Hotel Fukuoka (Free Wi-Fi)

→ Breakfast at hotel.

→ 8:30am – **Meet your guide at the hotel lobby for Hita, a city located in Oita Prefecture.**

→ 9:45am – Our day begins with a visit to the beloved **Kuncho Sake Brewery**. A well-known producer of high-quality, traditional Japanese sake, this brewery implements locally sourced ingredients and traditional brewing techniques to perfect its brew. Enjoy touring the facility, learning about the brewing process, and sampling a variety of sake products. A tip: try "Ginjo Ice," the original frozen yogurt made with Camargue red rice.

→ 10:30am – Next, off for a stroll in **Mameda Machi**. Known as Kyushu's "little Kyoto," this area was built during a prosperous time in the Edo period. Today, among the beautifully preserved streets and buildings, you'll find traditional shops, houses, cafes, museums, and souvenir stores.

→ From here, we'll drive to Beppu.

→ 12:45pm – Time for a Japanese-style lunch at a local restaurant.

→ 2:00pm – Now, a visit to 2 bubbling and steaming hot springs from a family of 8 Beppu onsens in the **Jigoku Meguri** ("Hell Tour").

Our first onsen sighting is **Umi-Jigoku** or "Sea Hell" for its beautiful cobalt blue. Despite being known as the "Hells of Beppu" for its unapproachable appearance and thermal temperatures of around 100 degrees, the hot springs are nationally acclaimed as a "place of scenic beauty."

Translated as "Blood Pond Hell," **Chinoike-Jigoku** is the oldest natural "hell pond" in Japan with a distinctive red hue colored by iron oxide.

Be sure to try the on site **onsen eggs** (boiled in the hot spring!) and "Jigoku Mushi-yaki Pudding" (**Pudding steamed in Hell**).

→ 5:30pm – **Return to hotel.** The remainder of the evening is yours at leisure.

### Day 5: (Fri) May 22 – Hakata-Free day at Leisure (B)

ANA Crowne Plaza Hotel Fukuoka (Free Wi-Fi)

→ After breakfast, enjoy your free day to explore the vibrant Hakata!

---

### Day 6: (Sat) May 23 – Hakata-Arita-Unzen (B/L/D)

Unzen Seiunso or similar (Free Wi-Fi) - [Enjoy Onsen](#)

→ Breakfast at hotel.

→ 8:15am – Meet your guide at the hotel lobby for Arita & Unzen.

→ 10:00am – Our morning begins with a visit to **Kouraku Kiln**, one of the most renowned kilns in Arita. A 150-year-old historical mainstay, Kouraku Kiln produces unparalleled porcelain ware and has contributed to Arita's success as the center of Japan's porcelain production. At the company's warehouse, we'll embark on a **"treasure hunt" experience** for your new favorite ceramics and unique omiyage finds.

→ 12:00pm – Enjoy **lunch at China on the Park**, a porcelain and pottery theme park operated by the prestigious Fukagawa Seiji company. Dating back over 120 years, the company first garnered international attention at the 1900 Paris World's Fair when famed ceramicist and company founder, Chuji Fukagawa, earned a gold medal for his intricately designed flower vase (on display here!). Shortly after, the Imperial family chose the Fukagawa Seiji company to furnish porcelain wares to the Imperial household. On the park's grounds, you'll find a treasured collection of pottery at the museum, a shop, a restaurant, and beautiful surrounding greenery.

→ 2:00pm – Now visit the **Yoko Museum**, which is known for its vast collection of beautifully crafted ceramics, porcelain, and jade. Neighboring the museum is **Keishu-En**, a magnificent Japanese garden designed by Kinsaku Nakane, who is regarded as one of the most gifted garden architects. The tranquil garden features a large koi pond, a traditional teahouse, seasonal flowers, waterfalls, stone formations of over 2,000 intricately arranged stones, and lush Mt. Mifune in the background.

→ From here, we'll drive to Unzen.

→ 5:00pm – Along the way, we'll visit **Unzen Jigoku**, also known as Unzen Hell. This geothermal area is famous for its breathtaking volcanic landscapes and bubbling hot springs. Visitors can marvel at steam rising from the ground, explore sulfur deposits, and appreciate the natural beauty of the surrounding mountains.

→ 5:45pm – Arrive at **Unzen Seiunso**, followed by a **Japanese style dinner at 6:30pm**. The hotel's onsen is a great place to unwind after dinner. Enjoy the evening!

---

### Day 7: (Sun) May 24 – Unzen-Shimabara-Kumamoto (B/L)

One Station Hotel Kumamoto (Free Wi-Fi)

→ Breakfast at hotel.

→ 8:30am – Meet your guide at the hotel lobby for a full day tour to Kumamoto, the largest and most influential city in central Kyushu.

→ 9:00am – Our day begins with a brief ride on the **Unzen Ropeway**, which climbs to the top of Mount Unzen. In late spring, the mountain's hillside is typically filled with vibrantly colored azaleas that bloom in bright yellow, pink, and deep red. Take in the mountainous and flowering views from the gondola's large windows and at the peak's observation deck.

→ 10:45am – Next, experience a **fun blueberry picking** activity, famous in Shimabara.

→ 11:45am – Enjoy **lunch at a local restaurant**.

→ 1:50pm – **Ferry ride (Kyusho Ferry 5) from Shimabara Port to Kumamoto**.

→ 2:20pm – After arriving at **Kumamoto Port**, we'll make a transfer to our next destination.

→ 3:00pm – This afternoon, we'll pay a visit to the magnificent **Kumamoto Castle**. Its massive castle grounds and impressive hilltop design has been aptly described by Japanese statesman and naval engineer, Katsu Kaishu, as there being "no other castle like this castle." Although part of the castle is still undergoing restoration in the aftermath of the 2016 earthquake—with full restoration estimated to be completed by 2037. While the inner grounds are closed to the public, we can gain access to this cultural landmark and enjoy the majestic scenes of its impressive stone walls and moats from the outside.

→ Afterwards, a stop at **Sakura no Baba Josaen**, a bustling feudal-era castle town with shops, restaurants, and a museum chronicling the history of Kumamoto. This is the place to get Kumamoto's local products like lotus root stuffed with spicy mustard and satellite stores for independent wineries in the prefecture.

→ 5:30pm – Arrive at **One Station Hotel Kumamoto**.

Our hotel is located in a bustling area with easy access to shopping, dining, and entertainment options.

---

### Day 8: (Mon) May 25 – Kumamoto-FUK-HND-Honolulu (B)

→ Breakfast at hotel.

→ 8:30am – Meet your guide at the hotel lobby for a visit to **Nagomi-machi**, a town in northwestern Kumamoto Prefecture. This town has a rich history in traditional papermaking, which flourished from the Edo through



Meiji periods. At its peak in 1879, Nagomi-machi was home to around 850 small-scale family-run papermaking operations, comprising 65% of Kumamoto Prefecture's total paper production. Over time, the local papermaking industry declined and had disappeared entirely by 1962 as larger-scale modern paper mills became more dominant. Today, Nagomi-machi preserves the legacy of its papermaking heritage through tourism initiatives that showcase the traditional techniques and products.

→ **9:45am** – Roll up your sleeves and get ready for your **handmade washi paper making experience** at the **Tesuki Washi no Yakata** for this ancient craft.

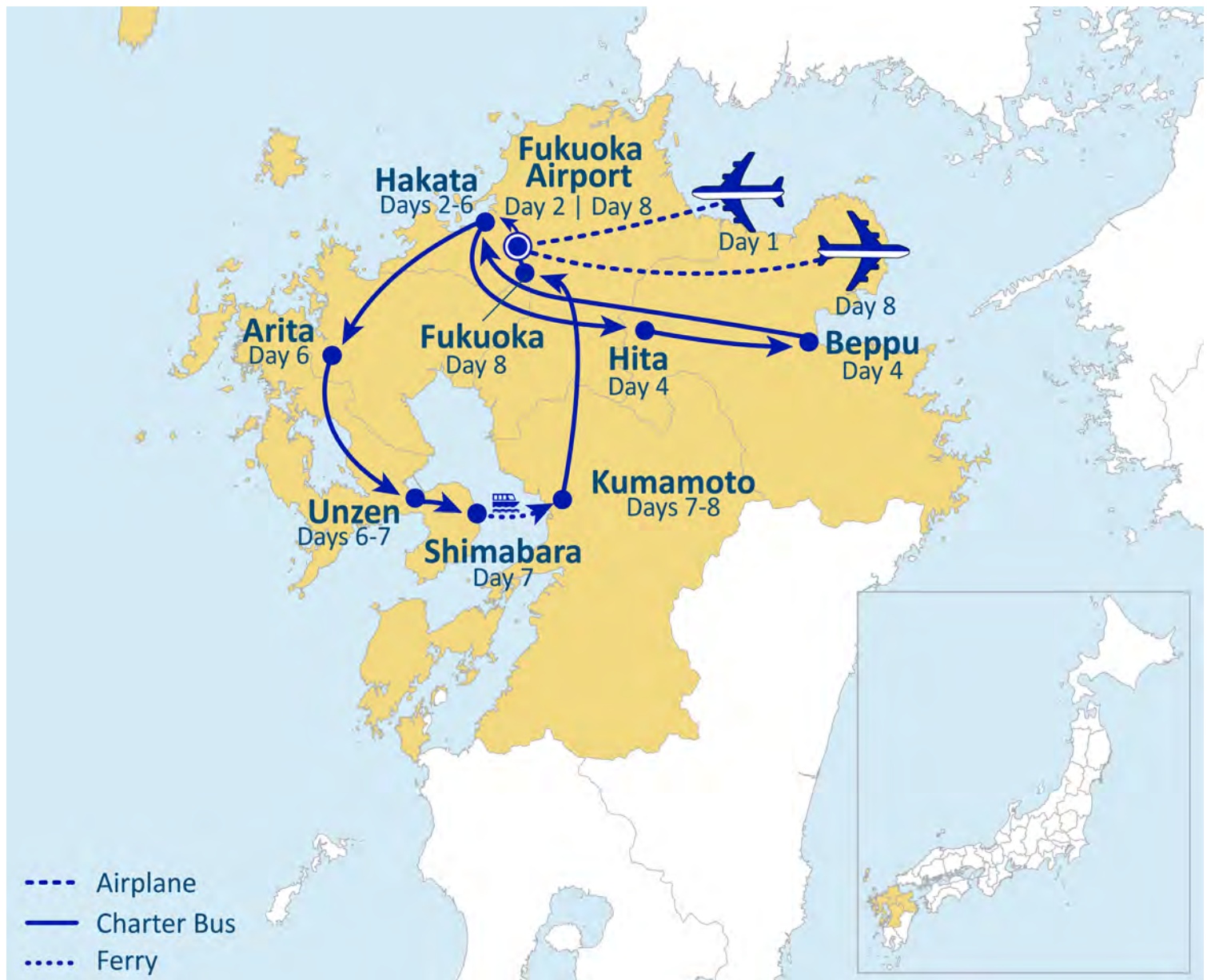
→ **12:30pm** – On the way to the airport, we'll stop by a hot spot in Fukuoka: **Mitsui Shopping Park LaLaport Fukuoka**, a large shopping complex that houses hundreds of shops. Enjoy some last minute shopping at this popular destination for locals and visitors.

→ **2:15pm** – Arrive at **Fukuoka Airport**. We'll board a **Japan Airlines domestic flight (JL322)** from Fukuoka to **Haneda Airport**.

→ **6:35pm** — Upon arrival at Haneda, we'll take a shuttle bus to the International Terminal to check in for our flight home (**JL74**).

→ **Arrive in Honolulu on the same day.**

Thank you for traveling with us! 🐼



# Need to Know...



## Payment Policy

- » To secure your reservation, a \$150 per person deposit is required. The deposit can be refunded until February 13, 2026.
- » Final payment due by March 20, 2026. Package is non-refundable after this date.

## \* Fares and Fees (Priced in USD)

- » Are subject to change in light of fuel supplements, taxes, and differences in costs.
- » Air ticket fare is guaranteed, but taxes, fees, and fuel surcharges are subject to change until tickets are issued.
- » We reserve the right to make changes to the itinerary with or without notice.



## Special Assistance

- » You must inform us of any disability/impairment that requires special attention at the time of your making the reservation.
- » We reserve the right to cancel the reservation(s) if the disability/impairment is unsuitable for the tour.
- » You are also responsible for any costs and/or accommodations related to your disability/impairment, such as providing your own travel companion.



## Travel Insurance

- » We highly recommend the purchase of trip insurance. Please ask our representatives for more information.



## Travel Documents

- » A valid passport is required for all U.S. citizens and must be valid and not expire at least 6 months from the return tour date.
- » Non-U.S. passport holders must check with the Japanese Consulate to see if a visa is required.



## Land Tour Operator & Costs

- » Land Tour Operator is Nippon Travel Agency.
- » Land Tour costs are based on current currency conversion rates, which are subject to change.



## Other remarks

- » Not Included in the tour: Gratuities for local English speaking guide; additional baggage fee charges from the airlines; alcohol and soft drinks with meals.
- » A minimum of 16 participants are required for the tour to operate.
- » You are expected to abide by domestic and international government and accommodation policies related to health, safety, and welfare.