

Join Panda Travel in...



2025 Summer Adventure on Tokaido Road #1

(GP13305)



Cancel for any reason up
to 65 days prior to departure
date for a FULL REFUND!

June 4 - 11, 2025
6 Nights/ 8 Days

*Osaka - Universal Studios - Nara -
Kyoto -Tokyo - Disneyland*

\$100 OFF PER PERSON
on our complete package when you
pay with a personal check/cash

\$3,628*

per person-triple occupancy

\$3,628*

per person-double occupancy

\$4,298*

single occupancy

pandaonline.com

(808) 734-1961

1017 Kapahulu Ave, Honolulu, HI 96816

A minimum of 16 participants is
required for the tour to operate

Itinerary

Day 1: (Wed) Jun 4 – Honolulu Depart Honolulu

→ Meet the Panda Travel representative 3 hours prior to departure at the airline's check-in counters.

Day 2: (Thu) Jun 5 – Kansai-Osaka

Hotel Monterey Grasmere Osaka (Free Wi-Fi)

→ Arrive at Kansai International Airport and meet your guide at the arrival lobby. We'll then transfer to Hotel Monterey Grasmere Osaka for the next two nights. Our hotel is set in a modern high-rise building and is located just a short walk to Osaka's most famous entertainment districts.

Day 3: (Fri) Jun 6 – Osaka-Universal Studios (B)

Hotel Monterey Grasmere Osaka (Free Wi-Fi)

→ Breakfast at hotel.

→ 8:30am — Meet your guide at the hotel lobby to get ready for exciting Universal Studios.

→ 9:00am–6:00pm — Ranked Japan's best theme park, **Osaka Universal Studios** sets itself apart as ever evolving, but consistent in delivering unique Japanese specific character shows and foods. In February 2021, the park opened the world's first ever Super Nintendo World. In addition to Minions, JAWS!, and the Wizarding World of Harry Potter, other character world attractions unique to this park are Snoopy Studios, Hello Kitty, and Sesame Street.

Just outside the park's gates is **Universal Citywalk Osaka**, a shopping mall with a variety of restaurants and shops selling Universal Studios merchandise and Osaka souvenirs. On the mall's 4th floor, you can find the Osaka Takoyaki Museum, a food theme park with popular Takoyaki vendors and exhibits.

→ 6:30pm — Return to hotel. The rest of the evening is yours at leisure.

Day 4: (Sat) Jun 7 – Osaka-Nara-Kyoto (B)

Miyako Hotel Kyoto Hachijo (Free Wi-Fi)

→ Breakfast at hotel.

→ 8:30am – Meet your guide at the hotel lobby.

→ 9:00am – Our morning begins with a visit to **Osaka Castle**, an important landmark in Osaka. Built as a display of power by Toyotomi Hideyoshi after he achieved his goal of unifying Japan, this castle has endured centuries of conflict with battles and war, serving as the battleground for samurai sword fights on several occasions. This led to several reconstructions, with it being reinforced with concrete in 1930 for further preservation. As you walk through, you

can spot shadows of past previous renovations and notice the massive stone walls, gold-leaf trim, copper roof, and panoramic views.

→ 11:00am – Our next visit: **Dotonbori district** and **Shinsaibashi Shopping Arcade**, the city's most famous entertainment area offering endless dining and shopping. With our 2 hrs here, enjoy time to shop!

→ 2:15pm — Now, onto our next adventure: **Todaiji Temple** (Great Buddha), a **UNESCO World Heritage Site** and a cultural landmark of Nara. Completed in the year 752, the temple once served as Japan's head Buddhist temple. Its most notable feature is **Daibutsuden** (Big Buddha Hall), which houses one of Japan's largest Buddha statues: a bronze figure towering at nearly 50 feet and weighing an impressive 121 tons. Inside the hall, you can find a pillar with a large opening carved at its base that's said to be the size of Daibutsu's nostril. According to legend, those who are able to squeeze through will be granted enlightenment in their next life.

→ Outside the Todai-ji Temple, you can find over 1,000 wild deer roaming about at **Nara Deer Park**. Believed to protect the temple grounds as messengers of the gods, the Nara deer can be found sniffing the pockets of passersby for food or happily snacking on shika senbei (deer crackers) that visitors can purchase.

→ 5:00pm — Arrive at **Miyako Hotel Kyoto Hachijo**, our accommodations for the next 2 nights. Conveniently located across the street from the Kyoto JR Station and around the corner from the Aeon Mall, you'll find a wide variety of food and shops in every direction.

Day 5: (Sun) Jun 8 – Kyoto (B/L)

Miyako Hotel Kyoto Hachijo (Free Wi-Fi)

→ Breakfast at hotel.

→ 9:00am — Meet your guide at the hotel lobby as we make our way to **Arashiyama**. Located in the outskirts of Kyoto and set against the backdrop of mountains, bridges, and ponds, this picturesque destination is teeming with natural beauty and culture. Some suggestions for exploring this tranquil area.

→ 9:45am — Venture into the internationally recognized cultural and picturesque landmark, **Sagano Bamboo Path**. Rooted in Japanese belief, bamboo has the power to ward off evil and deliver good fortunes, protecting the nearby Buddhist temples and Shinto shrines. When you walk through the tunnels of bamboo, you can feel the energy of the forest. Wander around and marvel at the soaring stalks of bamboo that surround you.

→ Or take a half an hour uphill hike to reach **Iwatayama Monkey Park**. There, you'll find mischievous monkeys

scurrying about in their natural habitat or munching on a bag of apples that visitors can purchase. Another benefit of making this trek is the astounding panoramic views of Kyoto atop.

→ If shopping is on your to-do-list, there are plenty of shops to collect items like traditional fans, bamboo goods, and specialty snacks. This is also a great opportunity for you to take a break from walking and hitch a ride on a rickshaw!

→ **12:30pm — Japanese style lunch at a local restaurant.**

→ **2:00pm** — Now, enjoy a hands-on experience crafting Japanese sweets and taking part in a **tea ceremony**. During the **wagashi making session**, you'll learn how to create beautiful and delicious sweets using traditional techniques. Afterwards, savor a tea ceremony where you'll observe the art of preparing matcha tea and learn about Japanese tea culture and etiquette.

→ **3:30pm — Return to hotel.** The remainder of the afternoon and evening is yours at leisure.

Day 6: (Mon) Jun 9 – Kyoto-Tokyo-Disney (B)

Grand Nikko Tokyo Bay Maihama (Free Wi-Fi)

→ **Please leave your luggage at the hotel. Your luggage(s) will be delivered by chartered truck from Kyoto to your hotel in Maihama (same day arrival).**

→ **Breakfast at hotel.**

→ **8:30am — Meet your guide at the hotel lobby. We'll walk to Kyoto Station and board a bullet train to Tokyo.**

→ **11:15am** — Upon arriving at **Tokyo Station**, our next destination is **Asakusa**, a famous district that melds the culture and traditions of ancient Tokyo with the metropolitan styles of modern Japan. It's also home to Japan's first cinema!

→ **12:00pm** — Widely regarded as the most important temple in Japan, Asakusa's iconic **Sensoji Temple** and **Kaminarimon Gate** (aka "Thunder Gate") with its massive lantern are a "must see" in every guidebook, boasting over 30 million annual visitors. Traditionally, as a sign of respect, visitors clap twice and bow their heads at the top of the temple steps. With the belief that coins trap the dangers of daily life, visitors also customarily make a small offering by tossing coins into a wooden rack, tossing away **those** dangers as well.

→ You'll also find the **Five Storied Pagoda** there. Regarded as one of the "Four Edo Pagodas," this nearly 174 foot monument stands to represent Tokyo's few remaining pagodas. The temple grounds also include the **Nakamise Shopping Arcade**, a lively and extensive shopping street lined with good luck charms, traditional goodies, and Japanese snacks. Enjoy lunch on your own.

→ **2:30pm** — Next, a stop at **Ueno & Ameyoko Shopping Street**. This is the absolutely perfect place to get your omiyage. "Ameyoko" is short for "Ameya Yokocho" or "candy shop back alley" since candies were traditionally sold there. Alternatively, it is short for "America," a callback to the post-WWII era when American products were sold there illegally. Now, the street is lined with over 400 shops from cooked street food, snacks like dried squid, and fresh seafood to clothes, bags, accessories, cosmetics, and much more!

→ **4:45pm** — Welcome to **Grand Nikko Tokyo Bay Maihama**, the official Tokyo Disney Resort® Hotel! During our 2 night stay, take advantage of the hotel's direct access to the Disney Resort Line monorail system. The monorail, which loops around the perimeter of the resort, will make several stops, including at the doorsteps of Tokyo Disneyland and DisneySea. Take a ride on the monorail this evening and hop off at Maihama station. Here, you'll find **Ikspiari**, a shopping complex featuring many shopping, dining, and entertainment options.

Day 7: (Tue) Jun 10 – Disney (B)

Grand Nikko Tokyo Bay Maihama (Free Wi-Fi)

→ **Breakfast at hotel.**

→ **8:15am — Meet your guide at the hotel lobby** for the monorail ride to Tokyo Disneyland.

→ Get ready for an exhilarating day at **Tokyo Disneyland!** Explore the many Tokyo Disneyland exclusive attractions like its glass covered Victorian-style indoor World Bazaar and the Beauty and the Beast mini-land that stretches from Belle's village square to Beast's Castle. Don't miss out on the spectacular PhilharMagic show (revamped in Sept 2022) and new rides like The Happy Ride with Baymax! In between attractions, snack on a chewy Stormtrooper mochi or hot, fresh popcorn featuring flavors like curry, cookie cream, and garlic shrimp. Enjoy making fun memories today!

→ **Return to hotel** — The monorail will transport you back to the hotel when you decide to return and rest up for the next day's adventure.

Day 8: (Wed) Jun 11 – Disney-Tokyo-Haneda-Honolulu (B)

→ **Breakfast at hotel.**

→ **9:30am — Meet your guide at the hotel lobby for Tokyo.**

→ **10:15pm** — Our morning begins with a visit to **Shibuya Scramble Square**. There, you'll find **Shibuya Sky**, an observatory offering a 360-degree view of Tokyo (there's a special spot to see Mt. Fuji on a clear day!), and over 200 commercial outlets with restaurants, cafes, and shopping. The tower also overlooks the famous and ever busy intersection, **Shibuya Scramble Crossing**. With giant video

screens and neon signs as a backdrop to several hundreds of people walking in all directions at every light change, this “scramble” of people is surely a site to witness. Don't forget to pay a visit to the famous **Hachiko Dog statue**.

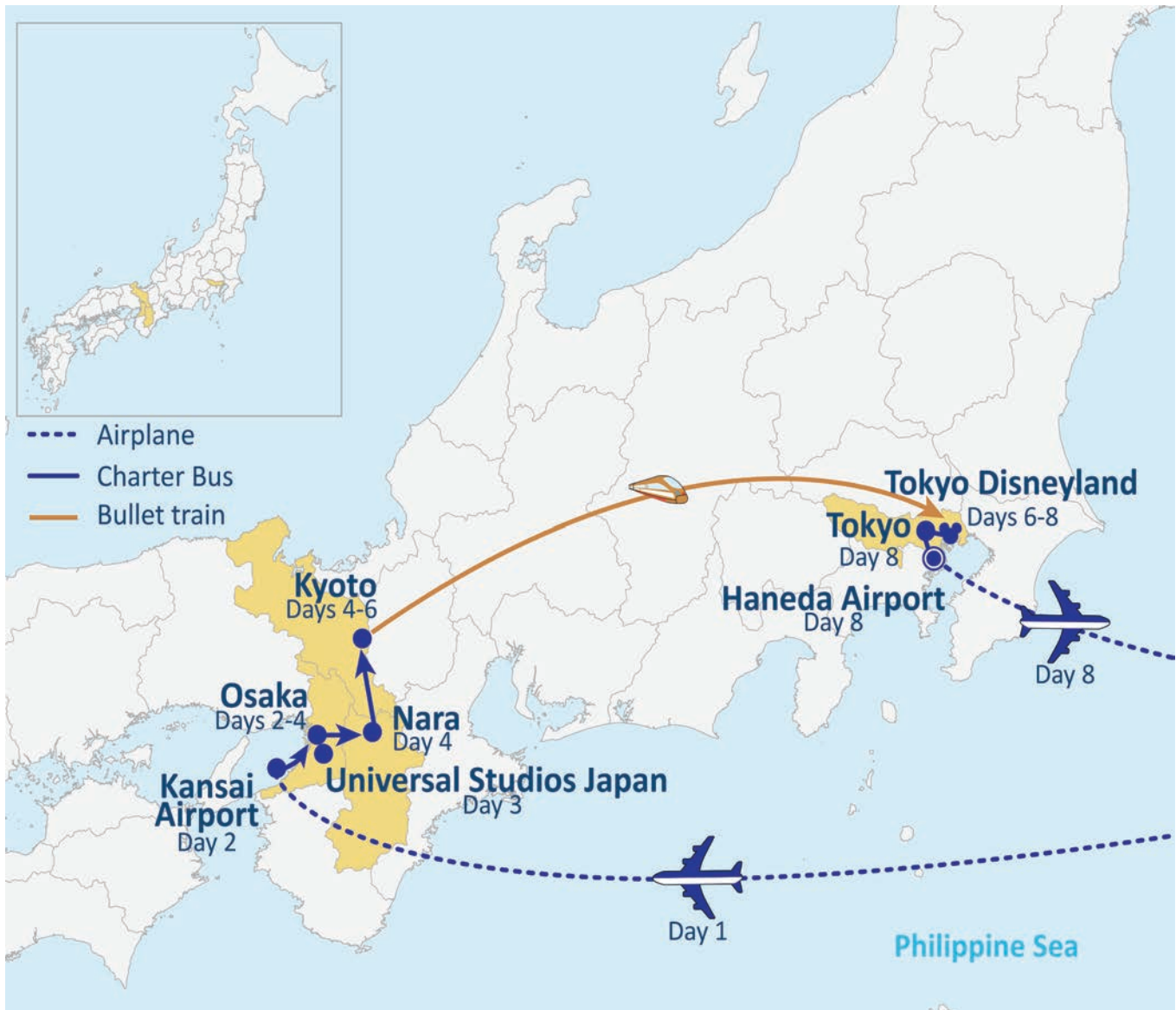
→ **12:45pm** — Opened in Feb 2024, **Toyosu Senkyaku Banrai** is inspired by the historic streets of Tokyo. This Edo themed multi-story shopping and entertainment center treats visitors to a variety of eateries featuring specialty foods like Toyosu's signature fresh seafood and produce. Enjoy lunch on your own.

→ **3:00pm** — Complete your last minute shopping at **Divercity Shopping Center**, located on the artificial island of Odaiba. This unique and massive landmark is one of Tokyo's premier destinations for shopping, dining, and entertainment. Don't forget to take a moment to snap a photo in front of the famous Gundam Statue, towering at nearly 80 feet high.

→ **Transfer to Haneda Airport for our flight home.**

→ **Arrive in Honolulu on the same day.**

Thank you for traveling with us! 🐼



Need to Know...



Payment Policy

- » Reserve with **\$75 per person deposit. Refundable up to 65 days prior to departure date, March 31, 2025.**
- » **Final payment due by April 12, 2025. Package is non-refundable after this date.**

* Fares and Fees (Priced in USD)

- » Are subject to change in light of fuel supplements, taxes, and differences in costs.
- » Air ticket fare is guaranteed, but taxes, fees, and fuel surcharges are subject to change until tickets are issued, approximately 53 days out.
- » We reserve the right to make changes to the itinerary with or without notice.



Special Assistance

- » You must inform us of any disability/impairment that requires special attention at the time of your making the reservation.
- » We reserve the right to cancel the reservation(s) if the disability/impairment is unsuitable for the tour.
- » You are also responsible for any costs and/or accommodations related to your disability/impairment, such as providing your own travel companion.



Travel Insurance

- » We highly recommend the purchase of trip insurance. Please ask our representatives for more information.



Travel Documents

- » A valid passport is required for all U.S. citizens and must be valid and not expire at least 6 months from the return tour date.
- » Non-U.S. passport holders must check with the Japanese Consulate to see if a visa is required.



Land Tour Operator & Costs

- » Land Tour Operator is Nippon Travel Agency.
- » Land Tour costs are based on current currency conversion rates, which are subject to change.



Other remarks

- » Not Included in the tour: Gratuities for local English speaking guide; additional baggage fee charges from the airlines; alcohol and soft drinks with meals.
- » A minimum of 16 participants are required for the tour to operate.
- » You are expected to abide by domestic and international government and accommodation policies related to health, safety, and welfare.