

Join Panda Travel in...



2025 Hokkaido Great Northern Summer Highlights, including Rebun and Rishiri Islands

(GP13331)



July 18 - 28, 2025
9 Nights/ 11 Days

*Haneda - Otaru - Furano - Biei -
Asahikawa - Nayoro - Wakkanai -
Rebun - Rishiri - Sapporo*

\$100 OFF PER PERSON
on our complete package when you pay
with a personal check/cash

\$5,398*

per person-triple occupancy

\$5,398*

per person-double occupancy

\$6,698*

single occupancy

pandaonline.com

(808) 734-1961

1017 Kapahulu Ave, Honolulu, HI 96816

A minimum of 16 participants is required for the tour to operate

Itinerary

Day 1: (Fri) Jul 18 – Honolulu Depart Honolulu

→ Meet the Panda Travel representative 3 hours prior to departure at the airline's check-in counters.

Day 2: (Sat) Jul 19 – Haneda Airport

Haneda Excel Hotel Tokyu (Free Wi-Fi)

→ Upon arrival at Haneda Airport, meet your local English-speaking assistant at the arrival lobby. Our accommodation for tonight is **Haneda Excel Hotel Tokyu**, conveniently located on the airport grounds. Enjoy your evening at leisure.

Day 3: (Sun) Jul 20 – Haneda-Chitose-Otaru-Furano (B/D)

New Furano Prince Hotel (Free Wi-Fi) - [Enjoy Onsen](#)

→ Breakfast at hotel.

→ Depart Haneda to New Chitose Airport via ANA/All Nippon Airways NH51.

→ Welcome to Hokkaido! Upon arrival at **New Chitose Airport**, meet your English-speaking local guide at the arrival lobby to start our tour for Furano.

→ **10:30am** – This morning, explore **Otaru Sakaimachi Street**, an avenue lined with Otaru's famous glassworks, music boxes, eateries and sweet shops. As you near the end of Sakaimachi Street, you'll come across the **Music Box Museum's** renowned vintage clock. The museum houses 15,000 music boxes playing a variety of sounds including classical concertos, hits from the Beatles, and the latest J-pop tunes. Another must visit is the **Kitaichi Glass Shop**, which was once a glass supplier for the Otaru fishing community and is now a store filled with beautiful glassworks.

→ **2:15pm** – We'll now stop at **Sunagawa Highway Oasis**, a large candy-colored shopping center run by Hokkaido's major manufacturers that offers an eclectic mix of Hokkaido specialties all under one roof (and it's duty free!). Browse through souvenir items and take notice of the wooden owls and bears, animals the indigenous Ainu people believe the gods inhabit.

→ **3:45pm** – After experiencing the Oasis, we will visit **Ohashi Cherry Farm**. Get your baskets ready for this **hands-on cherry picking** activity. Only 30 mins outside of Furano, the Ohashi Cherry Farm is home to 1,500 trees of 60 varieties that bear sweet, fully ripe cherries.

→ **5:30pm** – Arrive at **New Furano Prince Hotel**, followed by a **buffet dinner at 6:30pm**.

Feel free to enjoy the hot springs and other neighborhood activities before or after dinner. Check out the seasonal flowers at the Wind Garden with approximately 20,000 flowers of over 450 varieties and is just a few mins' walk from the hotel. You can also visit Ningle Terrace, a shopping area nestled in a forest of shops designed to resemble wooden cabins.

Day 4: (Mon) Jul 21 – Furano-Biei-Asahikawa (B/L)

JR Inn Asahikawa (Free Wi-Fi) - [Enjoy Onsen](#)

→ Breakfast at hotel.

→ **8:45am** – Meet your guide at the hotel lobby to start our morning tour in Furano.

→ **9:15am** – Our day begins with a visit to the **Furano Cheese Factory**. Here, we'll observe the local camembert-type cheese production process and nibble on various cheese samples, including the unique squid ink-infused black cheese. The factory also houses a pizzeria and an ice cream parlor where you'll **make your own ice cream**.

→ **10:45am** – Located on a hill overlooking the town of Furano, **Furano Winery** offers beautiful panoramic views while you sip on some wine, peruse the winery shop, and unwind with the aroma of the nearby lavender field.

→ **12:15pm** – Enjoy **Japanese style lunch at a local restaurant**.

→ **1:15pm** – Onto our next adventure, exploring **Flower Land Kamifurano**. Our tour includes a **tractor bus ride** for a more leisurely way to enjoy the lavender, salvia, and lilies that burst with color in the summer. On the other side of Flower Land is a large barn that holds an eatery, souvenir shop, and local goods and produce. The highlight, **Furano melon sampling**, is a fan favorite!

→ **2:45pm** – Now we are at **Shikisai-no-Oka (Four Seasons Hill)**. The vibrant display of colors at this flower garden carpet the 37 acre field and change with the seasons. From April to October, you can smell the wonderful fragrance of these flowers in bloom.

→ **4:15pm** – We'll continue to **Biei**, a small town surrounded by a picturesque landscape of gentle rolling hills and vast fields. Here we are at **Blue Pond**, an unnatural yet enchanting bright blue body of water that changes its hue depending on the viewing angle and time of day. Enjoy the spectacular views as we make a drive along the scenic northwest area of the Biei, aptly named the **"patchwork road"** for the appearance of its fields. Over the years, the area's beauty has garnered the attention of marketing professionals who have used the scenic area for commercials and package-label designs.

→ **6:30pm** – **Arrive at JR Inn Asahikawa.** Our hotel is connected to the JR Asahikawa Station and offers a direct elevator to AEON Mall for evening shopping. Unwind at the hotel's indoor and outdoor onsen. Enjoy your evening at leisure.

Day 5: (Tue) Jul 22 – Asahikawa (B)

JR Inn Asahikawa (Free Wi-Fi) - [Enjoy Onsen](#)

→ **Breakfast at hotel.**

→ **8:45am** – **Meet your guide at the hotel lobby for a full day tour in Asahikawa.**

→ **9:00am** – We begin our day at **Ainu Kawamura Kaneto Museum.** Built in 1916 and in the traditional Ainu style, this museum is an ode to the history, culture, and lifestyle of the native Kamikawa Ainu people who inhabit the lands surrounding the Sea of Okhotsk like Hokkaido Island. Through a collection of artifacts and storytelling, the museum celebrates this beautiful indigenous culture.

→ **10:30am** – Next **Rice Paddy Art.** You'll find an incredible display of Japanese innovation, design, and community effort. Using the rice paddy as its massive canvas, villagers harvest 6 types of colored plants to paint an agricultural masterpiece. More impressive is that the art theme changes annually! We'll marvel at this work of art from the observation deck.

→ **12:00pm** – Enjoy lunch on your own at **Asahikawa Ramen Village.** Asahikawa is famous for its shoyu-based broth coated with a thin layer of oil, unlike Sapporo's miso-based and Hakodate's salt-based broths. Asahikawa ramen is also distinctive for its thin, hard, and wavy noodles.

→ **1:30pm** – Next stop: **Nihon Shoyu Kogyo!** This is the home of Hokkaido's leading soy sauce manufacturer with products that some say "taste like Asahikawa." While there, spend some time picking up a few specialty goodies or sampling their soy sauce popsicles!

→ **3:00pm** – Established in 1899, **Takasago Sake Brewery** is the oldest kura in northern Japan and a major contributor to Asahikawa's past prominence as a large sake producer. This area is also known for its harsh winters, with temperatures regularly dropping to -20C, creating the perfect sake brewing environment. Taste, shop, and experience the sake tradition of old Japan.

→ **4:15pm** – **Return to hotel.** Enjoy the rest of the day at leisure.

Day 6: (Wed) Jul 23 – Asahikawa-Nayoro-Wakkanai (B/L/D)

Surfeel Hotel Wakkanai (Free Wi-Fi)

→ **Breakfast at hotel.**

→ **8:00am** – **Meet your guide at the hotel lobby to begin our drive to Nayoro, "the city covered in sunflowers."**

→ **9:45am** – This morning begins with a visit to **Sun Pillar Park Sunflower Fields**, where the 2011 Japanese film, "Star Watching Dog," was filmed. Enjoy the beauty of the sunflowers that blanket the fields.

→ **11:30am** – Next, we are off to a **Japanese style lunch** at a local restaurant. Afterwards, along the drive to Wakkanai, enjoy the views as we pass by **Otonrui Windmills Farm** on our journey to **Cape Soya**, the northernmost point in Hokkaido.

→ **3:15pm** – Here we are at **Soya Cape**, a popular stopping point for visitors and outdoor enthusiasts, the cape offers notable monuments, gift shops, a windmill, and a lighthouse. Standing proudly at the tip of Cape Soya is "**The Monument of the Northernmost Point of Japan**," which draws its design inspiration from the North Star. In clear weather, you can spot Sakhalin, a Russian island that was once a part of Japan and was discovered by Japanese explorer, Rinzo Mamiya. Today, his name is memorialized in a statue on the cape and on the Japanese world map as "Mamiya Strait."

→ **5:00pm** – **Arrive at Surfeel Hotel Wakkanai, followed by a buffet dinner.** Enjoy the evening at leisure.

Day 7: (Thu) Jul 24 – Wakkanai-Rebun (B/L/D)

Mitsui Kanko Hotel (Free Wi-Fi) - [Enjoy Onsen](#)

→ **Please prepare an overnight bag for the next 2 days. Courier services will deliver the luggage (limit 1 bag/person) from Wakkanai to Sapporo.**

→ **Breakfast at hotel.**

→ **8:30am** – **Meet your guide at the hotel lobby to get ready for Rebun Island**, situated at the northernmost tip of Japan.

→ **8:40am** – As Japan's northernmost market, **Fukko Market** is an oasis for all things Hokkaido. Here, you'll find fresh fish, vegetables, regional snacks, a cafeteria, and a cafe that offers soft serve topped with Hokkaido specialty, Shiroi Koibito (smooth chocolate sandwiched between 2 light cookies).

→ **9:20am** – Modeled after Greek architecture and built to withstand the area's harsh winds and waves, **Wakkanai North Breakwater Dome** is the only breakwater design of its kind in the world. In Oct. 2001, this symbol of Wakkanai earned a spot on Hokkaido Heritage's list.

→ **10:00am** – **Now, we'll head to Wakkanai Port for our ferry over to Kafuka Port, Rebun Island. A Japanese bento lunch box will be provided during the ferry ride.**

→ **12:25pm** – Upon arrival, we'll proceed to transfer to our next destination.

→ **12:45pm** – At the **Rebun Historical Museum**, we'll trace the cultural developments of the Island and discover the origins of its thriving fishing industry.

→ **2:00pm** – Now for some sightseeing at **Cape Sukoton**, the northernmost tip of Rebun Island. This vantage point offers stunning views, including unobstructed sights of uninhabited Todo Island ("Sea Lion Island") in the distance.

→ **3:15pm** – Here we are at **Cape Sukai**, where the sky meets the cobalt blue of the sea and the flowering plants of 300 species contrast against the dark hues of the rugged terrain.

→ **4:30pm** – Arrive at **Mitsui Kanko Hotel**, followed by a **Japanese style dinner at 6:30pm**. Relax at this hot spring hotel with onsens that overlook the ocean.

Day 8: (Fri) Jul 25 – Rebun-Rishiri (B/L/D)

Island Inn Rishiri (Free Wi-Fi) - [Enjoy Onsen](#)

→ **Breakfast at hotel.**

→ **9:45am** – Meet your guide at the hotel lobby to prepare for **Rishiri Island**, a small island of 5,000 inhabitants off the northern tip of Hokkaido and a part of the Rishiri-Rebun-Sarobetsu National Park. Rishiri Island is also home to one of Japan's 100 most famous mountains: Mount Rishiri. This massive dormant volcano is commonly referred to as "Rishiri-Fuji."

→ **10:25am** – Now, transfer by ferry from **Kafuka Port, Ruben Island to Oshidomari Port, Rishiri Island.**

→ **11:10am** – Upon arrival, we'll head to a **Japanese style lunch at a local restaurant.**

→ **12:45pm** – After lunch, our tour continues with a visit to **Oatomari Swamp**. Unlike your typical swamp, you'll find a beautiful blue pond with stunning views of Mount Rishiri in the background. There's also a small cafe that sells fresh seafood, as well as ice cream with regional flavors like rosehip and bamboo grass!

→ **2:00pm** – Located along the coastline, historic **Semposhi Misaki Park** offers some of the best views on the island and is home to many aquatic life, including seals!

→ **3:15pm** – Here, we'll learn about Rishiri's history, culture, and community at **Rishiri Town Museum.**

→ **4:45pm** – Arrive at **Island Inn Rishiri**, followed by a **buffet dinner at 6:30pm**. Overlooking the Sea of Japan and Mount Rishiri, this hotel features stunning sunset viewing, which can be enjoyed from the dining room, outdoor bath, and the observation deck.

Day 9: (Sat) Jul 26 – Rishiri-RIS-CTS-Sapporo (B/L)

Mercure Hotel Sapporo (Free Wi-Fi)

→ **Breakfast at hotel.**

→ **8:30 am** – Meet your guide at the hotel lobby.

→ **9:00am** – The morning begins with a visit to **Fujinoenchi Park**. Located on the northern part of the island, this scenic spot offers gorgeous views of the grasslands with daylilies in full bloom.

→ **10:30am** – Uni lovers rejoice as we visit **Kamui Kaigan Park**. Here, you can **experience fresh sea urchin preparing and tasting**. The island is famous for its high quality sea urchins given the island's location and ocean currents.

→ **11:45am** – Next, enjoy **Japanese style lunch at a local restaurant.**

→ **2:05pm** – Depart Rishiri to Chitose via **ANA/All Nippon Airways #NH4930.**

→ **3:15pm** – After arriving at **New Chitose Airport**, we'll head out to **Sapporo.**

→ **5:00pm** – Arrive at **Mercure Hotel Sapporo**, our accommodation for the next 2 nights. The hotel is located just a short walk away from **Sapporo's Tanukikoji Shopping Street**, the city's oldest covered shopping arcade dating back to 1868. Stretching for 10 blocks, the Tanukikoji features over 200 stores, making it a vibrant hub for shopping, dining, and entertainment in the heart of Sapporo. Enjoy the evening at leisure.

Day 10: (Sun) Jul 27 – Sapporo-Free day at leisure (B)

Mercure Hotel Sapporo (Free Wi-Fi)

→ **Breakfast at hotel - the day is yours to explore Sapporo! Have fun!**

Day 11: (Mon) Jul 28 –

Sapporo-New Chitose Airport-Haneda-Honolulu (B)

→ **Breakfast at hotel.**

→ **9:15am** – Meet your guide at the hotel lobby.

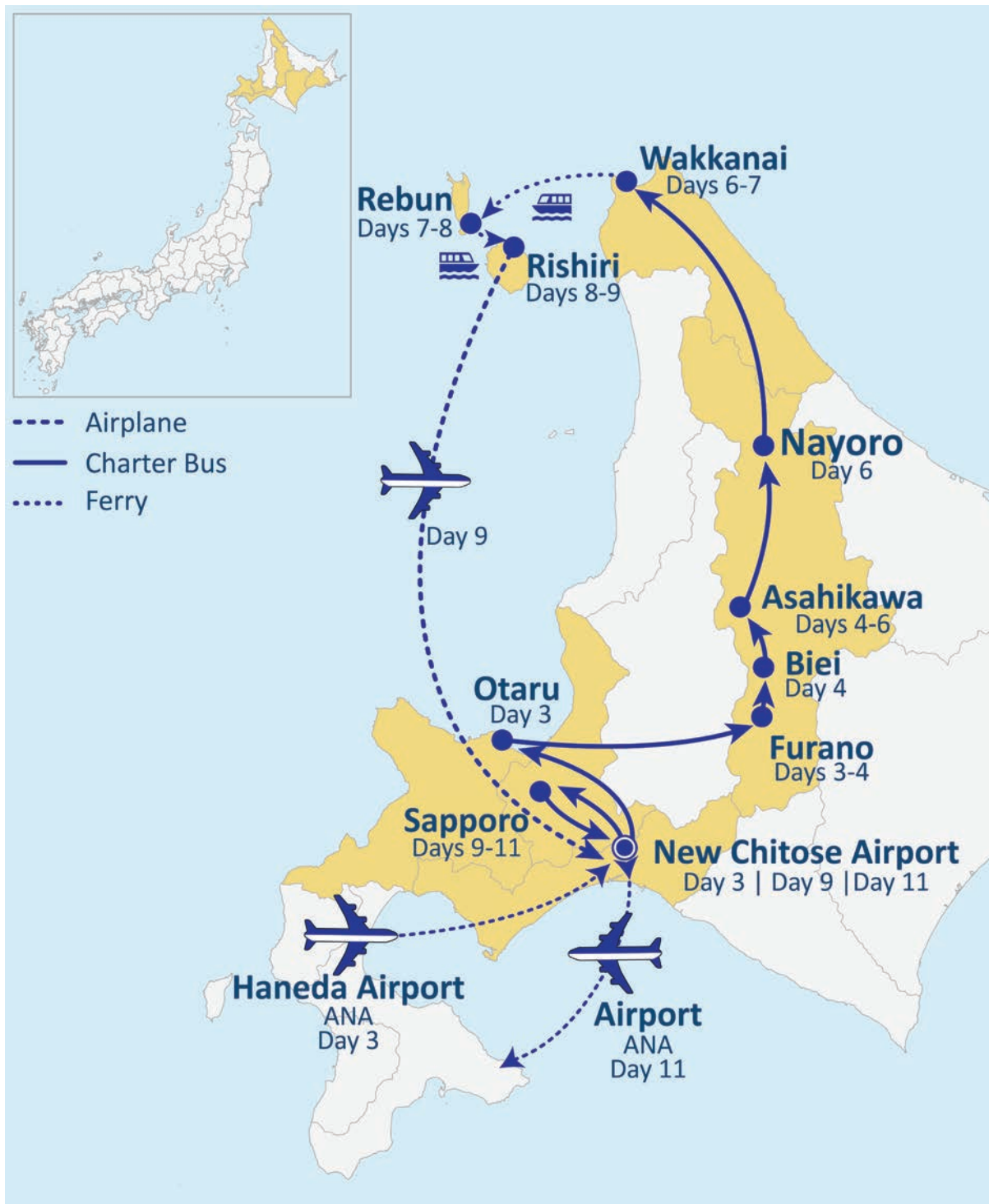
→ **10:00am** – Start our day at **Royce' Cacao & Chocolate Town**. This facility (launched in Nov 2022) takes visitors through an immersive factory experience. We'll learn how cocoa beans transform into chocolate bars, browse through Royce's antique collections, and indulge in the baked sweets, soft serve ice cream, and 200 types of chocolate available at their on-site shop.

→ **12:30pm** – Arrive at **New Chitose Airport**. We'll board an **ANA/All Nippon Airways flight (NH66) from Chitose to Haneda Airport**. Before boarding, round up any last minute shopping at the airport terminal.

→ 4:05pm – Upon arriving at Haneda, our local English-speaking escort will greet us at the arrival lobby. We'll then shuttle to Terminal 3 to begin our check in process for our flight home.

→ Arrive in Honolulu (same day).

Thank you for traveling with us! 



Need to Know...



Payment Policy

- » Reserve with **\$75 per person deposit. Refundable up to May 4, 2025.**
- » **Final payment due by May 16, 2025. Package is non-refundable after this date.**

* Fares and Fees (Priced in USD)

- » Are subject to change in light of fuel supplements, taxes, and differences in costs.
- » Air ticket fare is guaranteed, but taxes, fees, and fuel surcharges are subject to change until tickets are issued.
- » We reserve the right to make changes to the itinerary with or without notice.



Special Assistance

- » You must inform us of any disability/impairment that requires special attention at the time of your making the reservation.
- » We reserve the right to cancel the reservation(s) if the disability/impairment is unsuitable for the tour.
- » You are also responsible for any costs and/or accommodations related to your disability/impairment, such as providing your own travel companion.



Travel Insurance

- » We highly recommend the purchase of trip insurance. Please ask our representatives for more information.



Travel Documents

- » A valid passport is required for all U.S. citizens and must be valid and not expire at least 6 months from the return tour date.
- » Non-U.S. passport holders must check with the Japanese Consulate to see if a visa is required.



Land Tour Operator & Costs

- » Land Tour Operator is Nippon Travel Agency.
- » Land Tour costs are based on current currency conversion rates, which are subject to change.



Other remarks

- » Not Included in the tour: Gratuities for local English speaking guide; additional baggage fee charges from the airlines; alcohol and soft drinks with meals.
- » A minimum of 16 participants are required for the tour to operate.
- » You are expected to abide by domestic and international government and accommodation policies related to health, safety, and welfare.