

Join Panda Travel in...



# 2025 An Explosion of Color: Hokkaido Lavender Tour

(GP13320)



July 2 - 12, 2025

9 Nights/ 11 Days

*Haneda - Sapporo - Otaru -  
Asahikawa - Sounkyo - Biei - Furano  
- Lake Akan - Kushiro - Tokachigawa*

**\$100 OFF PER PERSON**  
on our complete package when you pay  
with a personal check/cash

**\$4,998\***

per person-triple occupancy

**\$4,998\***

per person-double occupancy

**\$6,198\***

single occupancy

[pandaonline.com](http://pandaonline.com)

(808) 734-1961

1017 Kapahulu Ave, Honolulu, HI 96816

**A minimum of 16 participants is  
required for the tour to operate**

# Itinerary

## Day 1: (Wed) Jul 2 – Honolulu Depart Honolulu

→ Meet the Panda Travel representative 3 hours prior to departure at the airline's check-in counters.

---

## Day 2: (Thu) Jul 3 – Haneda Airport

Haneda Excel Hotel Tokyu (Free Wi-Fi)

→ Upon arrival at **Haneda Airport**, meet your local English-speaking assistant at the arrival lobby. Our accommodation for tonight is **Haneda Excel Hotel Tokyu**, conveniently located on the airport grounds. Enjoy your evening at leisure.

---

## Day 3: (Fri) Jul 4 – Haneda-Chitose-Sapporo (B)

Sapporo Stream Hotel (Free Wi-Fi)

→ Breakfast at hotel.

→ 7:00am – Depart Haneda to New Chitose Airport via ANA/All Nippon Airways NH51.

→ 8:30am – Welcome to Hokkaido! Upon arrival at **New Chitose Airport**, meet your English-speaking local guide at the arrival lobby to start our tour for Sapporo.

→ 10:30am – Our morning begins with a visit to **Okurayama Ski Jump Stadium**. Constructed in 1931, the stadium was home to the 90m ski jump competition during the 1972 Sapporo Winter Olympic Games and is still used for competitions today.

Together, we'll **ride a ski lift** to the peak where a viewing lounge will provide us with a spectacular view of Sapporo, the Ishikari Plain, and Ishikari Bay. This is also the ideal location to see the starting line of the ski jump - look below at the steep slope to put yourself in the skiers' boots right before they begin their jumps!

→ 12:00pm – Now a stop at **Sapporo Central Wholesale Market (Jogai)**. This market offers some of the freshest fish and produce in Japan. At the "Curb Market," you can find approx. 60 stores selling everything from fruits to seasonal goods. Pick up some fresh crab and salmon sushi, a donburi bowl, or other regional delicacies as you enjoy lunch on your own here.

→ 1:45pm – Here we are at **Shiroi Koibito Park**, a whimsical theme park with a central mascot that's especially exciting: chocolate! Operated by famed local chocolate company, Ishiya, this theme park is known for its flagship confectionery, a buttery cookie sandwich with a thin white chocolate in between. Be sure to take home some cookies (the best Sapporo souvenirs!).

→ 3:00pm – Arrive at **Sapporo Stream Hotel**, opened in Spring 2024. Our hotel is just a short walk from **Tanukikoji Shopping Street**, offering many shopping and dining options. Enjoy the rest of the day at your leisure.

---

## Day 4: (Sat) Jul 5 – Sapporo-Otaru-Sapporo (B)

Sapporo Stream Hotel (Free Wi-Fi)

→ Breakfast at hotel.

→ 8:30am – Meet your guide at the hotel lobby as we are off to Otaru.

→ 9:15am – The morning begins with a visit to **Yurigahara Park**, home to over 6,400 types of flowers and plants, comprising 4 different gardens built in collaboration with Sapporo's sister cities, Portland, Munich, and Shen Yang. The park features unique flower beds and gardens including the "Lily Plaza of the World," where approximately 100 types of lilies are collected from around the world make for an incredible sight to see. And at 10:00am, we'll catch the "Lily Train" which takes us through the park to explore and enjoy the spectacular scenery.

→ 11:00am – Onto our next adventure: **Royce' Cacao & Chocolate Town**. This facility (launched in Nov 2022) takes visitors through an immersive factory experience. We'll learn how cocoa beans transform into chocolate bars, browse through Royce's antique collections, and indulge in the baked sweets, soft serve ice cream, and 200 types of chocolate available at their on-site shop.

→ 1:30pm – This afternoon, explore **Otaru Sakaimachi Street**, an avenue lined with Otaru's famous glassworks, music boxes, eateries and sweet shops. As you near the end of Sakaimachi Street, you'll come across the **Music Box Museum's** renowned vintage clock. The museum houses 15,000 music boxes playing a variety of sounds including classical concertos, hits from the Beatles, and the latest J-pop tunes. Another must visit is the **Kitaichi Glass Shop**, which was once a glass supplier for the Otaru fishing community and is now a store filled with beautiful glassworks.

→ 5:00pm – Return to hotel. Enjoy the evening at leisure.

---

## Day 5: (Sun) Jul 6 – Sapporo-Asahikawa (B)

JR Inn Asahikawa (Free Wi-Fi) - [Enjoy Onsen](#)

→ Breakfast at hotel.

→ 8:30am – Meet your guide at the hotel lobby for a full day tour to Asahikawa.

→ 9:45am – Along the way, we'll stop at **Sunagawa Highway Oasis**, a large candy-colored shopping center run

by Hokkaido's major manufacturers. This fun spot offers many of Hokkaido's specialities such as melons, whole crabs, famous stuffed squid from Hakodate, and Royce chocolates. Browse through souvenir items and take notice of the wooden owls and bears, which are animals the indigenous Ainu people believe the gods inhabit.

→ **12:15pm** – Enjoy lunch on your own at **Asahikawa Ramen Village**. Asahikawa is famous for its shoyu-based broth coated with a thin layer of oil, unlike Sapporo's miso-based and Hakodate's salt-based broths. Asahikawa ramen is also distinctive for its thin, hard, and wavy noodles.

→ **1:15pm** – Now we are at the acclaimed **Otokoyama Sake Brewery**, which was founded in 1661 and became the official sake-maker for aristocrats during the Edo period. Otokoyama garnered fame as the 1st Japanese sake to earn the prestigious Monde Selection award in 1977 and has won 40+ gold medals internationally since then. Otokoyama's sake is so spectacular in part because it is brewed using the underground springwater that runs deep beneath the Hokkaido mountains. In addition to learning all about Otokoyama's sake brewing process and rich heritage, you'll have time to sample their world renowned sake and browse through magnificent sake sets and cups at their gift shop.

→ **2:45pm** – Next, we'll head to **Ueno Farm**. Famed botanical architect, Sayuji Ueno, drew inspiration from English cottage flowerings arrangements to design a beautiful landscape adaptable to Hokkaido's climate. Spend some time to stroll, ponder, and relax!

→ **4:30pm** – Arrive at **JR Inn Asahikawa**. Our hotel is connected to the JR Asahikawa Station and a direct elevator down to the AEON Mall. The city's shopping arcade entrance is also steps away. Besides its location, the hotel offers a public bath in a semi-outdoor setting. Enjoy the evening at leisure.

---

### **Day 6: (Mon) Jul 7 – Asahikawa-Sounkyo-Asahikawa (B/L)**

JR Inn Asahikawa (Free Wi-Fi) - [Enjoy Onsen](#)

→ **Breakfast at hotel.**

→ **8:00am** – **Meet your guide at the hotel lobby before we embark on a drive to Sounkyo**, a well-known hot spring resort town nestled among scenic gorges and towering cliffs.

→ **9:30am** – Our morning begins with a ride on the **Sounkyo Kurodake Ropeway**, a gondola that will transport us to Mount Kurodake's 5th station and provide unfettered access to the gorgeous surrounding natural landscape. What a beautiful way to start the day!

→ **11:15am** – Next, a visit to **Daisetu Mori no Garden**, a charming playground of vibrant wildflowers and varying species of plants in bloom.

→ **1:00pm** – Time for a **western-style lunch at Fratello di Mikuni by Chef Miyamoto**, which was awarded a **Michelin Star** in 2017. In addition to the beautiful surrounding natural scenery, the restaurant's use of fresh, locally sourced ingredients in its Italian-inspired dishes creates a memorable culinary experience that is unique to Hokkaido.

→ **2:15pm** – Now a step inside the enchanting snow and ice-covered world of the **Hokkaido Ice Pavilion**. After entering through a tunnel of lights and a mirror maze, we'll pick up a thick winter coat before proceeding to the -20°C zone of ice and giant icicle covered walls. Here you'll find the air glittering with "diamond dust" or tiny ice crystals that form from the moisture in the air, just as it does on particularly cold Hokkaido days. Be sure to also keep an eye out for the tank of "ice angels," beautiful and almost alien-like sea slugs with delicate wings that live under the drift ice in the sea north of Hokkaido.

→ **4:30pm** – **Return to hotel**. The remainder of the day is yours at leisure.

---

### **Day 7: (Tue) Jul 8 – Asahikawa-Furano (B/L/D)**

New Furano Prince Hotel (Free Wi-Fi) - [Enjoy Onsen](#)

→ **Breakfast at hotel.**

→ **8:00am** – **Meet your guide at the hotel lobby.**

The morning begins with a drive to **Biei**, a small town surrounded by a picturesque landscape of gently rolling hills and vast fields.

→ **8:45am** – Sit back and enjoy the scenic northwest area of the Biei, "**Patchwork Road**," so named for the appearance of its fields. Over the years, the area's beauty has attracted the attention of marketing professionals, and some trees were used in commercials or for package label designs. Among these famous trees are a row of larch trees on the Mild Seven Hill (from a cigarette commercial), a poplar named Ken and Mary Tree (from a car commercial) and the Seven Star Tree (which appeared on cigarette packages).

→ **9:30am** – Next, a visit to **Biei Blue Pond**, an unnatural yet enchanting bright blue body of water that changes its hue depending on the viewing angle and time of day.

→ **11:15am** – Now stop at **Takushin kan**, an exhibition hall with beautiful landscape photography by renowned photographer Maeda Shinzo and his eldest son Akira. The exhibition displays landscape photographs from across Japan with an emphasis on photos from the local Biei region. The photo gallery displays about 80 pieces of

artwork and allows you to enjoy viewing the beauty of Biei in all seasons. Unfortunately, you are not allowed to take photographs inside the gallery.

→ **12:10pm** – Onto our next excitement: **Shikisai-no-Oka** (Four Seasons Hill). The vivid display of colors at this flower garden carpet the 37 acre field and change with the seasons. From April to October, you can smell the wonderful fragrance of these flowers in bloom.

→ **1:30pm** – **Enjoy a Japanese-style lunch at a local restaurant.**

→ **3:00pm** – Our last stop on this touring day is **Tomita Farm**. With Daisetsuzan National Park as a backdrop and colorful flowers and plants like lavender abound, this is easily one of the most photographed spots in Hokkaido. As you stroll through the farm, check out the flower arrangements display area, the photo gallery exhibiting the farm's four seasons of flowers, the distillery house where lavender essential oil is extracted, and several gift shops and cafes.

→ **4:30pm** – **Arrive at New Furano Prince Hotel, followed by a buffet dinner at 6:00pm.** Feel free to enjoy the hot springs and other neighborhood activities before or after dinner. Check out the seasonal flowers at the Wind Garden with approximately 20,000 flowers of over 450 flower varieties which is a few min walk from the hotel. You can also visit Ningle Terrace, a shopping area nestled in a forest of shops designed as wooden cabins.

---

### Day 8: (Wed) Jul 9 – Furano-Lake Akan (B/D)

Hotel Lake Akan Tsuruga Wings, Lake view room (Free Wi-Fi) -  
[Enjoy Onsen](#)

→ **Breakfast at hotel.**

→ **8:50am** – **Meet your guide at the hotel lobby to start our morning tour for Furano.**

→ **9:15am** – Our day begins with a visit to the **Furano Cheese Factory**. Here, we'll observe the local camembert-type cheese production process and nibble on various cheese samples, including the unique squid ink-infused black cheese. The factory also houses a pizzeria and an ice cream parlor where you'll **make your own ice cream.**

→ **10:30am** – Located on a hill overlooking the town of Furano, **Furano Winery** offers beautiful panoramic views while you sip on some wine, peruse the winery shop, and unwind with the aroma of the nearby lavender field.

→ **11:30am** – Grab lunch on your own at **Furano Marche**, a cluster of approx. 20 shops in the heart of downtown Furano. Enjoy some free time to browse and shop. Popular foods include ramen, burgers, takoyaki, rice ball varieties,

freshly made ice cream, and much more!

→ **3:00pm** – Now, a stop at **Michi no eki Pier 21 Shihoro**, a government designated rest area with food outlets, shops, and restrooms. Enjoy free time to shop.

→ **5:30pm** – **Arrive at Hotel Lake Akan Tsuruga Wings**, a stylish and contemporary hot spring Ryokan conveniently situated along the town's main street: **Ainu Koton**. Before dinner, take a stroll along Ainu Koton's shops, many of which stay open late into the evening. You may also find yourself unwinding at the hotel's famous onsen or browsing through the vast collection of indigenous and local artworks displayed on the hotel lobby floor.

→ **6:15pm** – Tonight, we'll dine on a delightful selection of dishes at the hotel's **buffet dinner**. After our meal, we'll take a short walk to Akan Ainu Kotan Village's theater to watch a traditional **Ainu fire dance show**, a beautiful performance portraying the Ainu lifestyle through song and dance.

→ **8:45pm** – After the show, we'll take a brief walk back to our hotel. The rest of the evening is yours to unwind and enjoy.

---

### Day 9: (Thu) Jul 10 –

#### Lake Akan-Kushiro-Tokachigawa (B/D)

Tokachigawa Onsen Daiichi Hotel, Toyo-tei (Free Wi-Fi) -  
[Enjoy Onsen](#)

→ **Breakfast at hotel.**

→ **8:45am** – **Meet your guide at the hotel lobby.**

→ **9:00am** – Our morning begins with a sightseeing **boat cruise** on the pristine waters of **Lake Akan**. Enjoy the panoramic views that are surrounded by breathtaking natural beauty.

→ We'll then drive to port city **Kushiro**, location of Japan's largest marshland and home to the iconic and majestic red-crowned Tancho cranes that you may recognize from Japanese folklore.

→ **11:45am** – For magnificent views, we'll stop at **Kushiro Marsh Observatory**. This incredible spot offers panoramic views of the rich wetlands and its wildlife inhabitants. The facility also features shops and restaurants.

→ **1:30pm** – Time for some shopping and lunch on your own at **Kushiro Washo Ichiba Market**, also known as "the Citizen's Kitchen." One of the top 3 markets in Hokkaido, this historic indoor fish market features fresh seafood, meats, produce, and confections. Dazzle in the brilliant sights and listen to "wasshoi wasshoi" fill the market, enthusiastic calls for goods and trade. Meander through the 60+ shops and perhaps delight in creating your own

bowl of Katte Don, a tailor-made seafood donburi and one of the famous attractions here.

→ **3:15pm** – Now a visit to the **Red-crowned Crane Nature Park**, a nature reserve designed to protect the iconic Japanese Tancho cranes. This rare breed is a powerful and sacred Japanese symbol that has also become synonymous with good luck and longevity.

→ **5:30pm** – **Arrive at Tokachigawa Onsen Daiichi Hotel, followed by a Japanese-style dinner at 6pm.** In addition to the gorgeous surrounding Hidaka Mountains, Tokachi Plains, and Tokachi River, the hotel offers 2 open-air baths. Famously, the Tokachi River's hot spring waters that flow through the hotel's onsen have received Hokkaido Heritage recognition. Rich in natural minerals derived from ancient plants, these amber waters are said to not only deeply revitalize and moisturize the skin, but their therapeutic properties also quell nerve and muscle pain, stiffness, arthritis, and fatigue. Enjoy the hotel's onsen.

---

### **Day 10: (Fri) Jul 11 – Tokachigawa-Sapporo (B/L)**

Sapporo Stream Hotel (Free Wi-Fi)

→ **Breakfast at hotel.**

→ **9:00am** – **Meet your guide at the hotel lobby for another fun-filled day of touring.**

→ **9:30am** – Our morning begins with a visit to **Manabe Garden**, one of the sites along the Hokkaido Garden Path. Famous for being the first and largest conifer garden in Japan, this massive green dreamland contains hundreds of tree species, some of which existed even before the development of Hokkaido! Enjoy your time relaxing in the tranquil atmosphere and breathe in the clean, crisp air of this hidden lush paradise.

→ **10:30am** – From here, a visit to scenic **Tokachi Hills**. Another member of the Hokkaido Garden Path, Tokachi Hills features 7 unique gardens and approximately 1,500 flowers and trees of varying species. Soak in the colorful, picturesque nature as you explore this gorgeous site.

→ **12:00pm** – Time for a **Japanese-style lunch** and a visit to **Shichiku Garden**. Designed to renew visitors' carefree, childlike desires to frolic in fields of color, Shichiku Garden achieves just that as a whimsical dreamland filled with flowers and various trees native to Hokkaido.

→ **From here, we'll drive to Sapporo.**

→ **5:00pm** – **Arrive at Sapporo Stream Hotel.** Enjoy the evening of shopping and dining on your own.

### **Day 11: (Sat) Jul 12 – Sapporo-Chitose-Honolulu (B/L)**

→ **Breakfast at hotel.**

→ **8:45am** – **Meet your guide at the hotel lobby.**

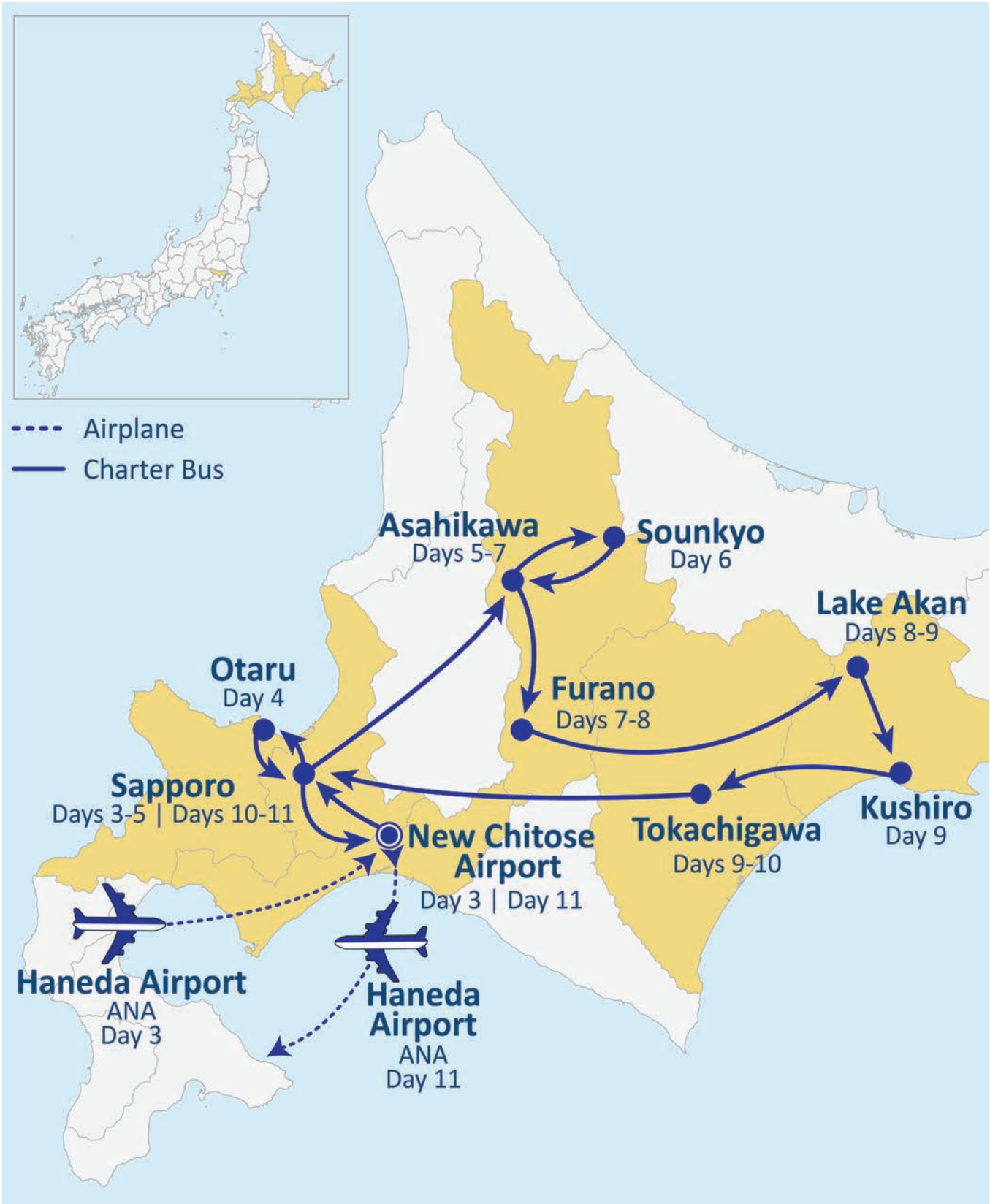
→ **10:00am** – We'll begin our day at **Yuni Garden**, a British-style garden featuring an array of flowers throughout the seasons. The garden also boasts a variety of herbs, inviting visitors to engage their senses as they explore. Be sure to stop by the garden shop for some herbal cookies and teas—perfect souvenirs! Afterwards, we'll have a **hands-on experience** where you can press flowers to create your own postcard. At 11:30 am, we'll enjoy a buffet lunch on-site.

→ **1:30pm** – **Arrive at New Chitose Airport. We'll board an ANA/All Nippon Airways flight NH66 from Chitose to Haneda Airport.** Before boarding, round up any last minute shopping at the airport terminal.

→ **5:10pm** – **Upon arriving at Haneda, our local English-speaking escort will greet us at the arrival lobby. We'll then take a shuttle to Terminal 3 to begin the check in process for our flight home.**

→ **Arrive in Honolulu (same day).**

Thank you for traveling with us! 



# Need to Know...



## Payment Policy

- » **To secure your reservation, a \$75 per person deposit is required. The deposit can be refunded until April 10, 2025.**
- » **Final payment due by April 22, 2025. Package is non-refundable after this date.**

## \* Fares and Fees (Priced in USD)

- » Are subject to change in light of fuel supplements, taxes, and differences in costs.
- » Air ticket fare is guaranteed, but taxes, fees, and fuel surcharges are subject to change until tickets are issued.
- » We reserve the right to make changes to the itinerary with or without notice.



## Special Assistance

- » You must inform us of any disability/impairment that requires special attention at the time of your making the reservation.
- » We reserve the right to cancel the reservation(s) if the disability/impairment is unsuitable for the tour.
- » You are also responsible for any costs and/or accommodations related to your disability/impairment, such as providing your own travel companion.



## Travel Insurance

- » We highly recommend the purchase of trip insurance. Please ask our representatives for more information.



## Travel Documents

- » A valid passport is required for all U.S. citizens and must be valid and not expire at least 6 months from the return tour date.
- » Non-U.S. passport holders must check with the Japanese Consulate to see if a visa is required.



## Land Tour Operator & Costs

- » Land Tour Operator is Nippon Travel Agency.
- » Land Tour costs are based on current currency conversion rates, which are subject to change.



## Other remarks

- » Not Included in the tour: Gratuities for local English speaking guide; additional baggage fee charges from the airlines; alcohol and soft drinks with meals.
- » A minimum of 16 participants are required for the tour to operate.
- » You are expected to abide by domestic and international government and accommodation policies related to health, safety, and welfare.