

Join Panda Travel in...



# Discover Japan in Fall Break 2024

(GPI3154)



Cancel for any reason up  
to 65 days prior to departure  
date for a FULL REFUND!

Oct 4 - 11, 2024  
6 Nights/ 8 Days

*Fukuoka - Shimonoseki - Iwakuni  
- Miyajimaguchi - Hiroshima -  
Kurashiki - Himeji - Kobe - Osaka*

**\$100 OFF PER PERSON**  
when you pay with a personal check/cash

**\$3,789\***

per person-triple occupancy

**\$3,789\***

per person-double occupancy

**\$4,039\***

single occupancy

[pandaonline.com](http://pandaonline.com)

(808) 734-1961

1017 Kapahulu Ave, Honolulu, HI 96816

A minimum of 16 participants is  
required for the tour to operate

# Itinerary

## Day 1: (Fri) Oct 4 – Honolulu Depart Honolulu via Hawaiian Airlines

Please meet the Panda Travel representative 3 hours prior to departure at the Hawaiian Airlines check-in counters.

---

## Day 2: (Sat) Oct 5 – Fukuoka-Hakata

Hotel Clio Court Hakata (Free Wi-Fi)

→ **6:40pm** – Arrive at **Fukuoka Airport**. Meet your local speaking guide at the arrival lobby. We'll transfer to **Hotel Clio Court Hakata**, our accommodations for the next 2 nights. Our hotel is conveniently located across the street to Hakata Station with many dining and shopping options.

---

## Day 3: (Sun) Oct 6 – Hakata (B)

Hotel Clio Court Hakata (Free Wi-Fi)

→ **Breakfast at hotel.**

→ **9:00am** – Meet your guide at the hotel lobby for a full day tour around Hakata.

→ **9:45am** – This morning begins with a visit to **Uminonakamichi seaside park**, home to millions of flora that bloom year round. This is considered to be one of Japan's top destinations, as many flock here to admire Fukuoka's urban nature. Stroll along the narrow peninsula across the bay from central Fukuoka and bask in the beauty of the Autumn Flowers.

→ **12:00pm** – If you're looking for a unique souvenir from Fukuoka, look no further than one of the most beautiful representations of Japanese culture: Hakata Dolls. Known for their soft colors and intricately carved expressions, these unglazed clay dolls are masterfully crafted from 500 year old traditional techniques. Here, we'll test our skills on this **hands-on doll-coloring experience** at the **Hakata Doll Hall Shogetsudo**.

→ **1:15pm** – We're now off to **Canal City**, also known as "city within the city." This is a large shopping and entertainment complex in Fukuoka. It has numerous attractions including a canal, local & international brand name shops, a theater, game center, two hotels, and a wide variety of restaurants. If you enjoy eating ramen, you must visit the Ramen Stadium on the 5th floor. There, you will find eight ramen shops with special noodles & soup favors from across Japan including the local specialty Hakata ramen. Enjoy free time to explore and have lunch on your own at Canal City!

→ **3:30pm** – **Return to hotel** – Enjoy the rest of the day at leisure.

---

## Day 4: (Mon) Oct 7 – Hakata-Shimonoseki-Iwakuni-Miyajimaguchi (B/L/D)

Aki Grand Hotel (Free Wi-Fi)

→ **Breakfast at hotel.**

→ **8:30am** – Meet your guide at the hotel lobby. This morning, we'll drive to Main island via Kanmon Bridge.

→ **10:15am** – We'll start our tour at **Karato Market**. Enjoy this "local kitchen," a bustling marketplace of fresh seafood and other regional delights!

→ **12:30pm** – **Kawara soba** will be served at a local restaurant, Yamaguchi's famous local food.

→ **1:45pm** – Designated as a Special Natural Monument, **Akiyoshi Cave** is a remarkable natural wonder and one of the largest limestone caves in Asia. Inside, you'll explore an underground world adorned with stunning stalactites, stalagmites, and intricate limestone formations. It is not just a geological marvel but also a popular tourist destination, offering a unique opportunity to delve into the hidden depths of the Earth's ancient geological history.

→ **4:30pm** – Then, we'll visit **Kintai-kyo Bridge**, a 2 star awardee of the Michelin Green Guide to Japan and the pride of Iwakuni City. With origins dating back to 1673, the bridge's dramatic and recognizable five arches were designed to slow the attack of invading armies as they struggled to sustain their energy after crossing each arch to reach Iwakuni Castle. Supported by six different types of joined wood interwoven, this historic structure is truly a testament to Japanese architectural ingenuity and craftsmanship.

→ **6:00pm** – Arrive at **Aki Grand Hotel**, followed by a **7:00pm Japanese dinner at the hotel**. Our hotel is located on a shoreline opposite a World Heritage Site, Miyajima Island. During your stay, enjoy the hotel's sauna, swimming pool, indoor bath, or open air outdoor bath with stunning waterfront views.

---

## Day 5: (Tue) Oct 8 – Miyajimaguchi-Hiroshima (B)

Rihga Royal Hotel Hiroshima (Free Wi-Fi)

→ **Breakfast at hotel.**

→ **9:00am** – Meet your guide at the hotel lobby. This morning, we are off to Miyajima Island.

→ **9:25am** – Now 10 min. **ferry ride to Miyajima Island**, also known as the "Island of Gods," and one of the most gorgeous destinations in Japan. You might recognize it from its oft-photographed vermilion Torii Gate (shrine gate) of Itsukushima-jinja, which seems to float on the waves at high tide.

→ **10:00am** – Once we arrive, we'll stroll along the main street that leads to **Itsukushima Shrine**, a UNESCO World Heritage site and one of Japan's most unique shrines. The shrine is dedicated to the god that protects from sea disasters and wars. Most noteworthy are its Torii Gate and the Shaden (shrine pavilion), which are both submerged under the sea at full tide. At low tide, the water recedes completely and it's possible to walk out to the gate.

→ **11:00am** – Enjoy lunch on your own, shop along **Omotesando Shopping street** for souvenirs like Shamoji (a rice scoop), and sample Hiroshima delicacies like Momiji manju (buns shaped like maple leaves and filled with a bean-jam filling).

→ **12:55pm** – **Leaving Miyajima by taking a ferry ride to Hiroshima.**

→ **2:00pm** – This afternoon, a visit to **Hiroshima Peace Memorial Museum/Hiroshima Peace Memorial Park/A-Bomb Dome**. After WWII, Japanese architect Kenzo Tange spearheaded the design of this park to commemorate the lives lost on August 6, 1945. The A-Bomb Dome, the only remaining structure in the area from the first atomic bomb, was designated a UNESCO World Heritage Site in 1996.

→ **4:30pm** – **Arrive at Rihga Royal Hotel Hiroshima.** Enjoy the evening at leisure.

---

### **Day 6: (Wed) Oct 9 – Hiroshima-Kurashiki-Himeji (B)**

Hotel Nikko Himeji (Free Wi-Fi)

→ **Breakfast at hotel.**

→ **8:30am** – **Meet your guide at the hotel lobby.**

→ **10:45am** – This morning, explore **Kurashiki Bikan Historical Quarter**, a beautifully preserved historical area converted from the former city's rice storehouses with modern eateries, souvenir shops, and museums woven in. Immaculately preserved from the Edo period, this old rice-merchant quarter consists of around 300 old houses and granaries, with the oldest being 300 years old. Some families who have lived here for generations are still there! Today's old Kurashiki consists of dozens of characteristic whitewashed, black-tiled kura (rice granaries) centered around a willow-lined transport canal, making for a beautiful picturesque scene. It is a "must see traditional neighborhood" that blends the past with the present. Have lunch on your own and do some small kine shopping.

→ **2:15pm** – We'll now stop at **Himeji Castle and Koko-en Gardens**, one of the last surviving feudal castles, also known as "White Heron Castle" for its unique white exterior and resemblance to a bird taking flight. Himeji boasts 83 buildings and is adjacent to a beautiful preserved Japanese garden, Koko-en, built in the architectural style of the Edo

period (1603-1867). A stroll through the nine different gardens within Koko-en will reveal the Garden of Bamboo, the Tea Ceremony Garden, the Garden of Pine Trees, and other gardens designed to highlight Japan's four seasons. It's no wonder Himeji Castle is widely regarded as Japan's national treasure and a UNESCO world heritage site!

→ **4:15pm** – Arrive at **Hotel Nikko Himeji** – After check-in, the remainder of the evening is free. Perhaps a visit to Piolo Himeji, the biggest shopping mall in Himeji, located a few blocks away from our hotel.

---

### **Day 7: (Thu) Oct 10 – Himeji-Kobe-Osaka (B/L)**

Hotel Monterey Grasmere Osaka (Free Wi-Fi)

→ **Breakfast at hotel.**

→ **8:30am** – **Meet your guide at the hotel lobby.**

→ **9:45am** – Our first visit this morning is the **Kobe Nunobiki Herb Gardens & Ropeway**. Reachable via a 10 minute gondola ride, this Kobe landmark features panoramic views of Kobe, Kyoto, and Osaka. Atop, you'll find the Welcome Garden with flowers in bloom, a recreation area with free play equipment, a hammock section, a souvenir shop selling herbs and other aromatic products, and a veranda with 360 views where you can grab a drink and some snacks while you enjoy the picturesque scenery.

→ **12:00pm** – We'll then head to lunch at a local restaurant and try one of Kobe's most significant culinary exports– **kobe beef**– a special grade of beef from Wagyu cattle raised in Kobe, Japan. These cattle are massaged with sake and are fed a daily diet that includes large amounts of beer. This produces meat that is extraordinarily tender, finely marbled, and full-flavored.

→ **1:30pm** – Next, we're off to **Hakutsuru Sake Brewery Museum** on the outskirts of Kobe. There, we'll learn more about Japan's national beverage and discover how sake is manufactured from grains of rice into its final sweet, fermented form. This brewery is inside an old sake kura and unlike a modern museum, the interior's unique smell and look will transport you to a brewery from the old-world, reflective of the building itself. As we wander through the various stages of sake-making, you'll have the opportunity to sip on freshly pressed sake.

→ **3:15pm** – **Arrive at Hotel Monterey Grasmere Osaka.** Enjoy the remainder of the day to explore the wonderful city of Osaka for shopping and dining on your own.

---

### **Day 8: (Fri) Oct 11 –**

### **Osaka-Kansai Airport-Honolulu (B)**

→ **Breakfast at hotel.**

→ 9:30am – Meet your guide at the hotel lobby to start our tour around Osaka.

→ 10:00am – Explore **Tsutenkaku Tower** this morning. This “Eiffel Tower of Osaka” features a statue of Billiken—a deity believed to bring good luck to those who rub the soles of its feet—and an observatory with sweeping views of the city. When the original Tsutenkaku was constructed in 1912 as a part of Shinsekai Luna Park (Japan’s second ever amusement park), it was the tallest structure in Asia and a major attraction in the region. Though the tower was dismantled to supply steel to the wartime economy during WWII, it was rebuilt in 1956 and remains the symbol of Osaka today.

→ Once here, we’ll also be visiting **Shinsekai District**, a quaint area adorned with lanterns and glowing neon lights. The iconic Shinsekai (“New World”) District is a gateway into Osaka’s early 20th Century past. Seemingly frozen in time, this retro playground of amusement arcades, shops, and eateries is a nostalgic experience you won’t forget!

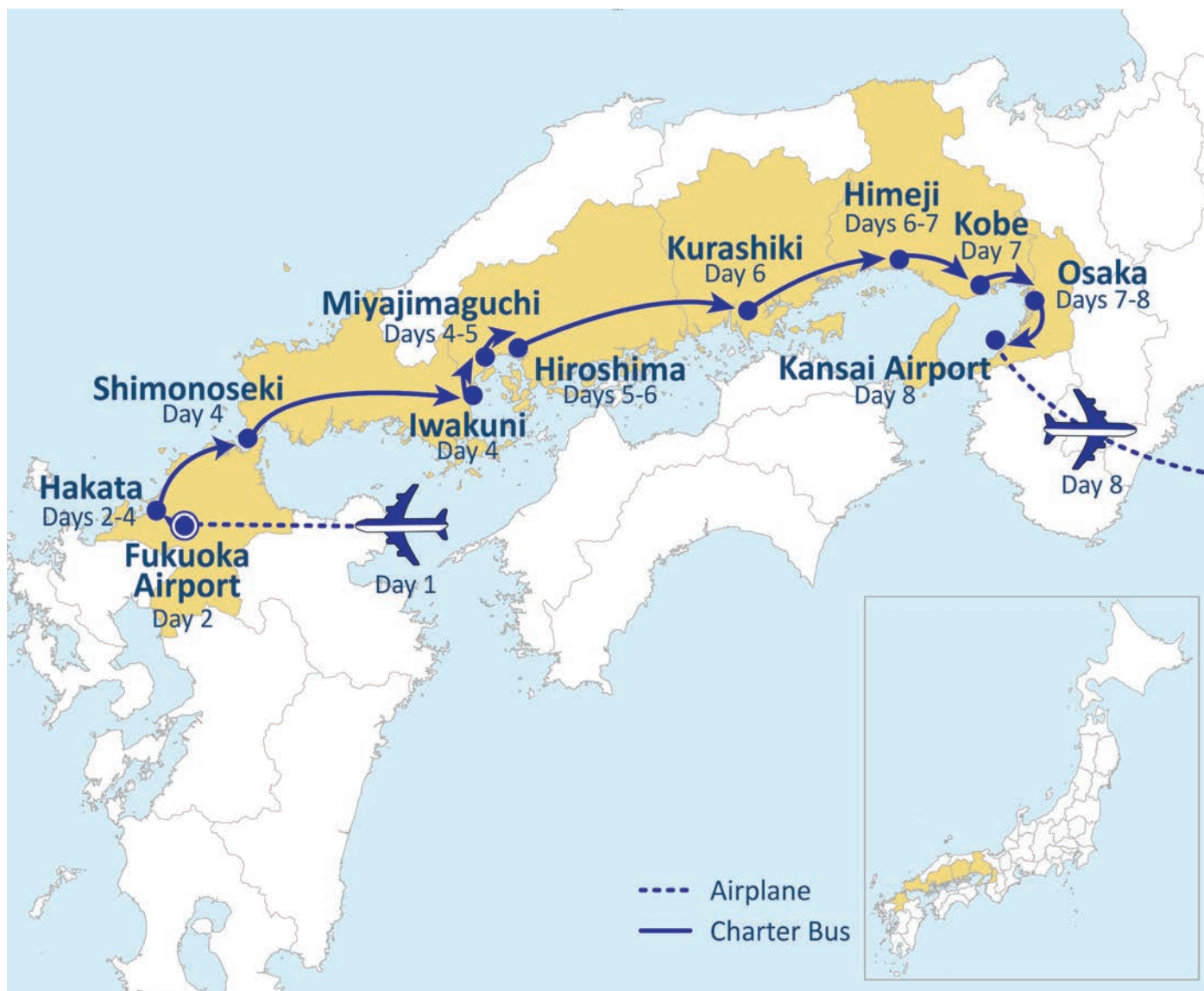
→ 12:45pm – Now a visit to the brand new (opened in Apr 2023) **LaLaport Kadoma/Mitsui Outlet Park Osaka Kadoma/Costco Kadoma**, the first ever shopping complex in Japan to combine these malls under one roof!

→ 5:00pm – Arrive at **Kansai International Airport** and begin our check-in process for the flight home.

→ Depart from Kansai via **Hawaiian Airlines**.

→ Arrive in **Honolulu (same day)**.

Thank you for traveling with us! 🐼



# Need to Know...



## Payment Policy

- » **Reserve with \$75 per person deposit. Refundable up to 65 days prior to departure date, July 31, 2024.**
- » **Final payment due by August 12, 2024. Package is non-refundable after this date.**

## \* Fares and Fees (Priced in USD)

- » Are subject to change in light of fuel supplements, taxes, and differences in costs.
- » Air ticket fare is guaranteed, but taxes, fees, and fuel surcharges are subject to change until tickets are issued, approximately 50 days out.
- » We reserve the right to make changes to the itinerary with or without notice.



## Special Assistance

- » You must inform us of any disability/impairment that requires special attention at the time of your making the reservation.
- » We reserve the right to cancel the reservation(s) if the disability/impairment is unsuitable for the tour.
- » You are also responsible for any costs and/or accommodations related to your disability/impairment, such as providing your own travel companion.



## Travel Insurance

- » We highly recommend the purchase of trip insurance. Please ask our representatives for more information.



## Travel Documents

- » A valid passport is required for all U.S. citizens and must be valid and not expire at least 6 months from the return tour date.
- » Non-U.S. passport holders must check with the Japanese Consulate to see if a visa is required.



## Land Tour Operator & Costs

- » Land Tour Operator is Nippon Travel Agency.
- » Land Tour costs are based on current currency conversion rates, which are subject to change.



## Other remarks

- » Not Included in the tour: Gratuities for local English speaking guide; additional baggage fee charges from the airlines; alcohol and soft drinks with meals.
- » A minimum of 16 participants are required for the tour to operate.
- » You are expected to abide by domestic and international government and accommodation policies related to health, safety, and welfare.